



ALBURY-WODONGA  
ARTISTS SOCIETY

# NEWSLETTER

PAINTBOX STUDIO/GALLERY  
GATEWAY ISLAND, LINCOLN CAUSEWAY,  
PO BOX 1170,  
WODONGA, VICTORIA 3689

www.awartsoc.org  
awas@awartsoc.org

VIC no. A0018404D

ABN 74817 556 011

**MAY 2025**

## What's on in MAY:

Studio sessions		
Saturday May 3rd	Life Drawing 1 – 4pm	Contact Olga 0447 770 735
Saturday May 10th	Acrylic/Mixed Media 10 - 4pm	Contact Jill: 0412 477 804
Saturday May 17th	Portraits 1 – 4 pm	Rotating coordinators. May contact Jill: 0412 477 804
Daily studio access for members, except when Life Drawing and tutored workshops are on.		Informal.
Meetings		
Wednesday May 21st	Informal members meeting Lunchtime 12.30/1pm approx.	Contact Secretary: 0497108076
Friday May 17th	Committee Meeting 1.30pm	Contact Secretary: 0497108076
Events, workshops exhibitions		
Tuesday May 13th	Studio exhibition changeover. <i>Wodonga Plant Farm exhibition continues.</i>	Contact Jill: 0412 477 804 Contact Tanya 0407 238 923
Friday May 23 <sup>rd</sup> & May 24th	<b>TUTORED WORKSHOP</b> <b>Japanese/Chinese Brush &amp; Ink painting on paper with Emi.</b>	Contact Kathy: 0497 108 076

Please note: Access to the studio is limited when Tutored workshops are on and when we have Life drawing sessions with a model. For these sessions participants must book with the coordinators prior to the day.

**For all payments to AWAS: Hume Bank BSB: 640-000 Account No: 111256122.**  
**Cheques to: The Treasurer, Albury Wodonga Artists Society, PO Box 1170, Wodonga. Vic. 3689. AWAS Treasurer: Tony Ph: 0438 402 499**

## AWAS EXHIBITIONS



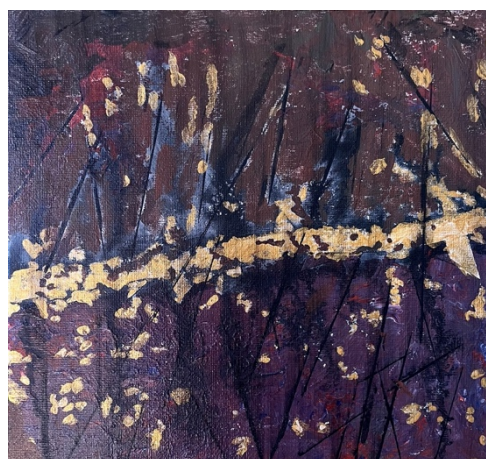
The changeover at the **Studio** is on **Tuesday 13<sup>th</sup> May. Any subject.** Don't forget to arrange a time to pick up your paintings from previous studio exhibitions!

Alongside the new paintings, at the end of this month we will have a display of samples of artworks done during the upcoming Chinese/Japanese ink & brush on paper workshop.

*Current paintings in the studio by Roy Stonebridge and Nancy Robinson*



The current exhibition at Wodonga Plant Farm Café is **“Something Gold”**.



*Acrylic paintings by Tony Smit and Marion Sharman in “Something Gold”*



The theme for the next exhibition at **Wodonga Plant Farm Café** is: “Monochrome”- Tones of one colour, plus black and white. (Any subject).

Those hanging exhibitions recently commented that we need members to bring in more large paintings.

*Acrylic painting in “Something gold” by Christina Zei*





## AWAS SATURDAY SESSIONS in MAY

Our regular Monthly Saturday **Life Drawing** is on again on Saturday **May 3rd**, 1-4pm. Contact the coordinator Olga (see list page 1) during the week and she will email details.

**Portraits** is on again on **17<sup>th</sup> May 1-4 pm**. Thanks Marion and Jill for coordinating this session. We need a volunteer for our next session!

Booking for these sessions are essential and fees apply, so please contact coordinators for details.

**Acrylic/ mixed Media Saturday is on May 10th** This is open to members who are using any art media when they can continue their individual art projects together. Usually, people are there between 10am to 2pm, but time is flexible.

## WORKSHOPS

THE Pan Pastels workshop with visiting tutor Chrissy Murray was on recently, and participants were enthusiastic about their experience. Judy reported at our members meeting that it was informative and very enjoyable. The tutor was extremely generous in her providing materials for all to use. It is good to be able to try without the expense of purchasing.

**On May 23<sup>rd</sup> and 24<sup>th</sup> (Friday and Saturday) we will welcome Emi Kamataki to our studio to run the Chinese/Japanese Brush and ink on paper workshop.** She also has generously offered to provide materials for the two days.

## AWAS MEMBER NEWS

- “Thank You” to AWAS member Cynthia Stewart who transported member’s entries to and from the Mitta Valley Art and Photography Show, held at Dartmouth hall at Easter time.
- Heather Green has requested that someone needs to take over updating the **AWAS Archives** folder (located in the library cupboard). She is unable to do this now. If you have any photos of AWAS members taken at our events, or other relevant photos or newspaper articles, bring them in to the studio, or email the secretary: [kathleenbruce@bigpond.com](mailto:kathleenbruce@bigpond.com)
- Photographing artworks framed under glass is very difficult-especially in the Café setting where light reflections prevent good photos of some really lovely works by our members. ***Please take some photos of your watercolours or pastels before framing and email them to the secretary, so we can show more artworks in the newsletter.***
- It was brought to our notice that well known landscape artist John Wilson has died. John lived in the Blue Mountains. He is internationally known, with work in galleries in Australia and overseas, and he has conducted oil painting workshops for many years. AWAS member Peter Drummond has organized workshops with John Wilson in Albury for quite a few years, mostly they were held in the Albury Scout Hall. Some of our members have attended these workshops.

- A wearable art exhibition by Julie Miller and Leanne O'Toole is on at Gateway Gallery. It closes on May 10<sup>th</sup>. Another exhibition there is Jewellery and paintings by Lee Eastman. It Closes on May 17<sup>th</sup>. Tuesday to Friday, 10-4pm Saturday 9-3pm.

At Hyphen, Wodonga:

## **Myth, Mayhem and Metropolis by Marco Luccio**

**Artspace Gallery | Friday, May 23 to Sunday, August 17**

Created by international, Melbourne-based artist Marco Luccio, *Myth, Mayhem and Metropolis* brings together four significant bodies of work that explore ancient myths, personal narratives and elements of the modern world.

*The Postcard Series*, *Tales from the Greek Series* and *The Garden of Sorrows and Aphrodite Series* draw inspiration from Greek mythology, offering a modern interpretation of ancient tales. *The Manhattan Series* was created during the artist's trips to New York City and captures the vibrant energy of the urban landscape.



At *Myth, Mayhem and Metropolis*, the viewer is invited to consider their own connection to love, urban life and myth, offering a fresh perspective on the stories that define us.

## **Arty things to do this month:**

- Book in for the Portrait session on May 17<sup>th</sup>
- Register and pay for the Chinese/Japanese Ink and Brush workshop (yes, late registrations taken, as we have a couple of spaces left)
- Go outdoors and do some drawing/painting
- Bring your painting in to the studio exhibition changeover Tuesday 13<sup>th</sup>
- Check out some art events and galleries in the region
- Come to the Informal Members meeting Wednesday 21<sup>st</sup>
- Prepare another artwork to go into the Plant Farm "Monochrome" exhibition next month

