



ALBURY-WODONGA  
ARTISTS SOCIETY

# NEWSLETTER

PAINTBOX STUDIO/GALLERY  
GATEWAY ISLAND, LINCOLN CAUSEWAY,  
PO BOX 1170,  
WODONGA, VICTORIA 3689

[www.awartsoc.org](http://www.awartsoc.org)  
[awas@awartsoc.org](mailto:awas@awartsoc.org)

VIC no. A0018404D

ABN 74817 556 011

**APRIL 2025**

## **What's on in APRIL:**

<b>Studio sessions</b>		
Saturday April 5 <sup>th</sup>	Life Drawing 1 – 4pm	Contact Olga 0447 770 735
Saturday April 12 <sup>th</sup>	Acrylic/Mixed Media 10 - 4pm	Contact Jill: 0412 477 804
Saturday April 19 <sup>th</sup>	<b>EASTER</b> Portrait Afternoon session cancelled.	
Daily studio access for members, except when Life Drawing and tutored workshops are on.		Informal.
<b>Meetings</b>		
Wednesday April 16 <sup>th</sup>	General members meeting (formal) 1pm	Contact Secretary 0497108076
Friday April 11 <sup>th</sup>	Committee Meeting 1.30pm	
<b>Events, workshops exhibitions</b>		
Tuesday April 8 <sup>th</sup>	<b>Wodonga Plant Farm</b> Exhibition changeover <b>2.30pm</b> Theme: Gold	Contact Tanya 0407 238 923
Tuesday February 11 <sup>th</sup>	<b>Studio exhibition continues.</b>	Contact Jill: 0412 477 804

**Note:** Easter studio sessions are cancelled, but members still have unlimited access.

This month we have a **Formal General meeting** on Wednesday April 16<sup>th</sup> at 1pm.  
(Every 2<sup>nd</sup> month on the third Wednesday, starting at 1pm) Let's try to keep the energy going.

We really need to have more members come along, not only to meet up socially and have input into our organization, but to help fulfil our legal obligations as an incorporated body. We keep the meetings short – we know everyone would rather paint and just chat!

**For all payments to AWAS: Hume Bank BSB: 640-000 Account No: 111256122.**  
**Cheques to: The Treasurer, Albury Wodonga Artists Society, PO Box 1170, Wodonga.**  
**Vic. 3689. AWAS Treasurer: Tony Ph: 0438 402 499**

## AWAS MEMBER NEWS

During March we welcomed 4 new members: Dione Garwell, Susan Makepeace, John Hudson and Janelle Langridge. All have attended the studio sessions recently and are known by current members.

Recently information was forwarded to those on email about upcoming exhibitions in the region, providing opportunities to participate or just to view:

Mitta Valley Art and Photography Show; The Tumut Easter Art Show; Alexandra Art Show and the Gallery 294 in Corowa.

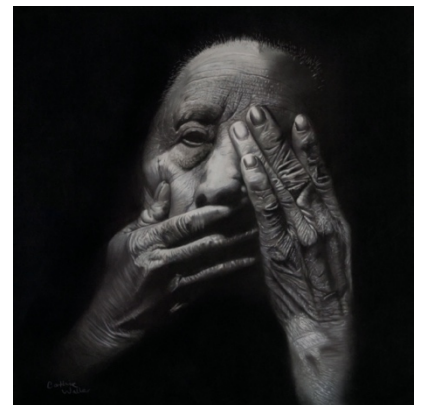
While the Gateway Gallery is closed because of renovations to the building, there is a wearable art exhibition opening there on April 15<sup>th</sup>, and another opening there on Wednesday 23<sup>rd</sup> April (Jewellery and paintings by Lee Eastman).

## CONGRATULATIONS!



*Congratulations to AWAS member **Cathie Waller**- awarded Best Pastel in the **Bright Autumn Art Exhibition** (see left), and awarded Highly commended in the monochrome category (right).*

*In April she begins as resident artist at the Gallery on Ovens in Wangaratta.*



## LIFE DRAWING

Our regular Monthly Saturday Life Drawing is on again on Saturday **April 5<sup>th</sup>**, 1-4pm. Contact the coordinator Olga (see list page 1) during the week and she will email details.

## ACRYLIC/MIXED MEDIA

Saturday **April 12<sup>th</sup>**. This is open to members who are using any art media when they can continue their individual art projects together. Usually, people are there between 10am to 2pm, but time is flexible.

## APRIL 8<sup>th</sup>: AWAS WODONGA PLANT FARM EXHIBITION

The changeover at the Plant Farm is on **Tuesday April 8<sup>th</sup>, 2.30pm**. Please make sure labelling is complete on the back of the work and is ready to hang.

**The next 4 month's themes for the Wodonga Plant Farm Café Exhibitions are:**

- April and May: Gold- colour, metal, plants, jewellery.....
- June and July: Monochrome- Tones of one colour, plus black and white. (Any subject)

## PAN PASTEL WORKSHOP MARCH 28<sup>th</sup> and 29<sup>th</sup> with Chrissy Murray

A very enjoyable and productive pastel workshop was held at the end of March. The tutor, Chrissy Murray was very generous in supplying all materials needed for pan pastel painting, such a bonus for those new to the technique, so they could “try before they buy”.



It was great to have some non-members join this workshop, including some who have been following Chrissy on social media and were keen to do a face-to-face workshop with her.

**AWAS Workshops:** When we run workshops with nationally recognised artist-tutors, the costs are higher for the workshops. As well as the cost per day for tutoring, we need to factor in the costs of travel and sometimes motel accommodation as well. Compare what AWAS charges participants per day with costs for the same tutor in the cities, and you will realise our profit margin is very small! For us to continue to engage really good tutors from afar, we need members to keep supporting us! We usually have 2 or 3 such workshops each year. Plan ahead, book your place in early, and get inspired. You will enjoy the experience.

Last year we asked for expressions of interest in a calligraphic brush and ink painting workshop with **Japanese artist Emi**. It will be on May 23<sup>rd</sup> and 24<sup>th</sup>. Why not plan ahead and book in now? Details in the following pages.



**HAPPY EASTER** from Heather Green.

*This watercolour is hanging in the Gallery Café, Wodonga Plant Farm, in our current exhibition.*

Heather participated in the Japanese Brush and Ink workshop with Emi last time she ran a workshop with AWAS.



## STUDIO EXHIBITION

The weather at the moment is perfect for outdoor picnics, but also outdoor painting!

*This painting by Roy Stonebridge is in our current members' exhibition in the studio. Reminiscent of a work by Manet (or was it by Monet?)*



### Reminders:

**The hanging wire** on the back of paintings need to be loose enough to fit a hand in between the wire and the painting, but not so loose as to be seen above the work when hung. The wire should be secured 1 third of the way from the top to be well balanced.

All artworks need to be for sale, have all the correct information on the labels and be ready to hang.



**AWAS commission on painting sales:** members need to be aware that AWAS policy is that the price of any artwork brought to the plant farm (or the studio) for sale at an AWAS exhibition must include the AWAS commission of 15%. This applies from the moment it enters the premises (eg the carpark).

### To do this month:

- Book in for Life Drawing this Saturday
- Register for the Japanese/Chinese Brush and ink workshop with Emi
- Go outdoors and do some drawing/painting
- Bring your "Something Gold" painting in to the Plant Farm Changeover
- Check out some art events and galleries in the region over Easter
- Come to the Members meeting
- Prepare another artwork to go into the studio next month.

## CHINESE /JAPANESE BRUSH, INK AND PAPER WORKSHOP with EMI

*Date: Friday 23<sup>rd</sup> and Saturday 24<sup>th</sup> May 2025*

We are delighted to announce that we have managed to arrange for Emi Kamataki to revisit us in May to run a brush and ink workshop.



A few of us attended the previous workshop a few years ago. We enjoyed the experience, found the focus on tonal control, sensitive linework and use of materials rewarding as well as challenging. Once you begin to explore this approach to working with brush, ink and water on paper, you realise that **brush control is relevant to many styles of drawing, watercolour, acrylic and oil painting.**



Most of us who did the previous workshop are keen to refresh our skills- it does take consistent practice.



Bold and confident brushstrokes create the illusion of spontaneity in artworks, which belie the acute observation and practised skill of the artist.

Emi's cultural background in ikebana and tea ceremony has deepened her understanding of Japanese art and the beauty of it. She loves the simple yet deep art of brush and ink on paper or silk. Emi is also exploring other possibilities within *sumi-e* and ways to develop her new style by absorbing other techniques like drawing, watercolour and pastel.



## Emi Kamataki

Emi learnt painting as a young child and calligraphy until she was 15 years old. In 2005, she came across *sumi-e* in Melbourne and since then has studied this art form under her master, Kinsui Katori, in Tokyo.

She is now a certified advanced lecturer of the International Sumi-e Association and has been awarded numerous times at exhibitions in Tokyo. She has also exhibited her works in China, France, UK, Estonia, Singapore, Chile and Australia and her art works are housed in USA, China, Singapore, Germany, Japan and Australia.

During March this year (2025), she has been in Shaoxing, China for China-Japan Cultural Exchange Exhibition at Keqiao Art Museum, where she participated as a Sumi-e painter with other artists in calligraphy and seal carving. Also in April, she will collaborate with 3D artists for Hoshino Monster Project at Ginza YW Gallery, Tokyo. Her skills extend from traditional work to modern pop art.



*Apart from exhibiting works, she teaches at schools as an artist in residence, runs adult group classes, and gives lectures and demonstrations at events and for companies. She also works on commissions.*

Emi's tutoring costs are much higher in Melbourne- she says she enjoys having a "break" here visiting her friend Midori in Wodonga, so we are grateful for this opportunity.

Thanks for your hospitality, Midori!

Now we have a date that suits both Emi and Midori, and fits in with the AWAS activities.

**To participate please contact the coordinator as soon as possible to register.**

We need confirmation to ensure we have enough participants for the workshop to be financially viable.

**All materials for the workshop will be supplied.**

Cost: \$190 – members. \$200– non-members. Deposit: \$75 (or full payment if you prefer) due Monday 14<sup>th</sup> April. Balance due Wednesday April 30<sup>th</sup>.

Expression of interest / commitment to this class: Kathy- 0497108 076.

[kathleenbruce@bigpond.com](mailto:kathleenbruce@bigpond.com)

A Registration Form for this workshop is included at the end of this newsletter.

# *JAPANESE INK AND BRUSH PAINTING*

## **Two - Day Workshop Enrolment Form**

***Tutor: Emi Kamataki***

***Date: Friday 23<sup>rd</sup> and Saturday 24<sup>th</sup> May 2025***

Cost: \$190 – members. \$200– non-members. Deposit: \$75 (or full payment if you prefer) due Monday 14<sup>th</sup> April. Balance due Wednesday 30<sup>th</sup> April.

Expression of interest / commitment to this class: Kathy- 0497108 076.

[kathleenbruce@bigpond.com](mailto:kathleenbruce@bigpond.com)

### **YOUR DETAILS:**

Name: \_\_\_\_\_

Address: \_\_\_\_\_

Phone: \_\_\_\_\_ Email: \_\_\_\_\_

Payment: ☐ Deposit \$ \_\_\_\_\_ ☐ Full payment \$ \_\_\_\_\_

Payment Method: ☐ Cash ☐ Cheque ☐ Direct Deposit - Bank/Internet

Signed \_\_\_\_\_ Date: \_\_\_\_\_

***Please advise Workshop Co-ordinator ASAP and the Treasurer when you have made payment.***

Co-ordinator: Kathy Bruce Email: [kathleenbruce@bigpond.com](mailto:kathleenbruce@bigpond.com) Phone: 0497 108 076

Treasurer – Tony Smit [ajs48@bigpond.com](mailto:ajs48@bigpond.com)

*Mailing & Bank Account details for AWAS Payments:*

*Mailing-Please include enrolment form and cheque.*

Postal Address: The Treasurer, P.O. Box 1170, Wodonga Vic. 3689

*Mail or email enrolment form to the coordinator.*

Electronic banking:

Account name: Albury Wodonga Artist Society

BSB: 640 000

Account Number: 111256122

***IMPORTANT information required when completing Internet banking transactions so that the Treasurer knows who has paid and what for.***

***In the REMITTER part - put your NAME in as a reference on your payment***

***In the DESCRIPTION part – “EMIKB”***