



ALBURY-WODONGA  
ARTISTS SOCIETY

# NEWSLETTER

PAINTBOX STUDIO/GALLERY  
GATEWAY ISLAND, LINCOLN CAUSEWAY,  
PO BOX 1170,  
WODONGA, VICTORIA 3689

www.awartsoc.org  
awas@awartsoc.org

VIC no. A0018404D

ABN 74817 556 011

## NOVEMBER 2024

### Summary: What's on during NOVEMBER

STUDIO sessions		
Saturday 2 <sup>nd</sup> November	<b>Life Drawing 1 – 4pm (model)</b> \$20, \$25 non-members. (Cash preferred)	Contact: Olga: 0447 770 735 <b>Booking essential</b>
Saturday 9 <sup>th</sup> November	<b>Acrylic/mixed media</b> approx. 10-2pm	Contact Jill 0412 477 804
Saturday 16 <sup>th</sup> November <i>Every day members can access studio except when tutored workshops and Life drawing is on.</i>	<b>Portrait session 1 – 4pm (model)</b> \$15 members, \$20 non-members (Cash preferred)	Contact: Astrid: astridbruning@gmail.com or Olga: 0447 770 735 <b>Booking essential</b>
Meetings		
Friday 15 November	Committee meeting 1:30pm	
Wednesday 20 November	AWAS members formal meeting 1pm	Secretary: Kathy 0497 108 076
AWAS Events, Workshops & Exhibitions		
Tuesday 12 <sup>th</sup> November	Studio exhibition changeover-bring works in/take home current works. 10am. Hanging of new exhibition.  Wodonga Plant Farm Exhibition continues.	Contact Jill 0412 477 804 for studio display information.
Wednesday 13 <sup>th</sup> November		Contact: Tanya 0407 238 923 For Wodonga Plant Farm café exhibition details.
Friday 22 <sup>nd</sup> November	<b>WORKSHOP: WATERCOLOUR 1 DAY</b> <b>With Graham Wade</b> Resist techniques (plus some other tricks)	Contact: Judy 0439 953 903 For workshop details

*Please contact the listed coordinators for any enquiries about these sessions.*

### AWAS MEMBERSHIP:

**Friday November 1st** is when we update our membership lists. If you have not paid your 2024-5 subscriptions by then, you will be a non-member! Membership is \$100.

For all payments to AWAS:

Hume Bank BSB 640 000

Account number: 111256122

Reference: Your name.

## REPORT: THE PORTRAIT SESSION: SATURDAY 19<sup>TH</sup> OCTOBER



On **Saturday 19<sup>th</sup> October** a Portrait session was held at the studio 1pm to 4pm. Each month on the 3<sup>rd</sup> Saturday one member will organize a model for the session, taking responsibility for that month only the booking details and payment of model. (\$50). Participant fees are \$15, \$20 for Non-members. **Our next Portrait session will be on Saturday 16<sup>th</sup> November.** If you plan to come, please contact Astrid or Olga (see list on page 1 for details).

### WODONGA PLANT FARM CAFÉ EXHIBITION:

The current exhibition, “**Plants**” continues. The last changeover for the year in December will be our Summer Sale, where the maximum price for your artworks is to be \$150, making them more suitable for gifts. The Themes for 2025 are:

- February: Babies or infants- any species! (Chickens! Puppies! Kittens! Tadpoles!.....)
- April: Gold- colour, metal, plants, jewellery.....
- June: Monochrome- Tones of one colour, plus black and white. (Any subject matter)
- August: From Abstract to Realism (this could be still-life)
- October: Landscapes and Seascapes
- December: Summer Sale

### AWAS STUDIO EXHIBITION:

New artworks can be brought in on **Tuesday 12<sup>th</sup>** for our changeover on Wednesday 13<sup>th</sup> November. The Gateway Christmas celebration is on December 14<sup>th</sup>, so lots of people will be around and most Gateway arts groups will have their doors open. Members of the public will be there to see the Fruit Fly Circus, participate in theatrical and musical events and attend food stalls. Let's have a good exhibition of saleable works for this event! People like to see works in progress too, so if you can, plan to come along for that event.

- The studio exhibitions alternate monthly with the Wodonga Plant Farm Exhibitions.
- They are hung on the second Wednesday of the month at 9.45am.
- Paintings can be brought in to the studio on the day before, on Tuesday.
- There are no set themes for the AWAS studio exhibitions.
- All artworks hung must be for sale, with the standard AWAS commission of 15%.
- Sign the artworks in when submitting them for exhibition, and out when collecting them.
- Ensure paintings can be hung: the hanging and labelling requirements are the same as for all AWAS exhibitions, identifying title, art medium, artist, contact details and price.

## WORKSHOP: WATERCOLOUR TIPS AND TECHNIQUES – with Graham Wade

### RESIST TECHNIQUES Friday 22<sup>nd</sup> November

The theme is using watercolour resist techniques with the subject matter of rocks. Graham had an example of his work at the last workshop showing this effect.

**The Material list and information about this workshop** has been added to Graham Wade's website. Go to either [www.grahamwade.com](http://www.grahamwade.com) and follow the links or go directly to [www.grahamwade.com/Pebbles](http://www.grahamwade.com/Pebbles) Everyone who registers for this workshop will be emailed this information as well.

#### Learn How to Paint Pebbles with Watercolour The Easy Way.



*with Graham Wade*  
**9am to 4pm - 22nd November 2024**

Painting a pebbly track, footpath, road or river bank with watercolour is easy when you know how.

Learn how to do this in a few easy steps during an upcoming workshop with Graham Wade.

#### IMPORTANT:

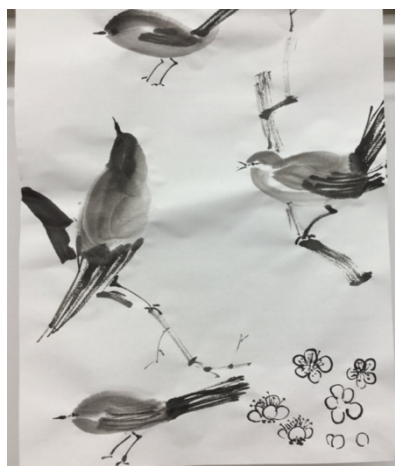
For painting pebbles at this workshop we need to PRE-STRETCH watercolour paper. It has to be dry on the day! If people don't know how to stretch watercolour paper, Jacinta at Art Parts in David Street, Albury, has some Gator Board in stock. You can buy some for the workshop and use the info in the video on his website about how to stretch it. (Gator Board is about \$60 for a half sheet size and it can be used multiple times.) She also has masking fluid, which will also be used in this workshop.

**Registration forms and payments should be in by now, but one is included at the end of this newsletter for a reminder of details. (and late registrations!)**

## FUTURE WORKSHOPS

Remember our Calligraphic painting workshop back in 2019 using Chinese brushes and ink?

**We are seeking expressions of interest** for another workshop with Japanese artist, Emi Kamataki. Midori informs us that Emi is willing to come back for another session with us.



Please contact Workshop coordinator Judy to register your EOI (Expression of Interest) so we can begin planning a session with Emi next year. (Judy : 0439 953 903 )

- Members are looking for a mixed media/acrylic workshop-preferably tutored by a local artist.



## LIFE DRAWING

The November and December life drawing will continue as usual to be on the first Saturday of the month, 1pm to 4pm. Booking beforehand with the coordinator, Olga, is essential so the booking can be confirmed with the model. Session fee for participants is \$15 for members, \$20 for non-members.



**The 4-day Life Drawing Marathon** is over the first weekend in January 2025: Friday 3rd Jan, Saturday 4th Jan, Sunday 5th Jan, Monday 6th Jan.

There will be 3 sessions on Friday and Sunday.

Times are: 9am to 12pm, 1pm to 4pm, and 6pm to 9pm

The late session late session requires a head torch because we will be drawing in the dark with coloured lights on the model. The head torch can be purchased at the Treasure Chest in Kiewa St near Westend Plaza or some other cheap shops) There are 2 sessions on Saturday and Monday.

Times are: 9am to 12pm, 1pm to 4pm

I will send out details of the timetable and the names of the models closer to the time. You can then choose any session or sessions and book with me.

Olga

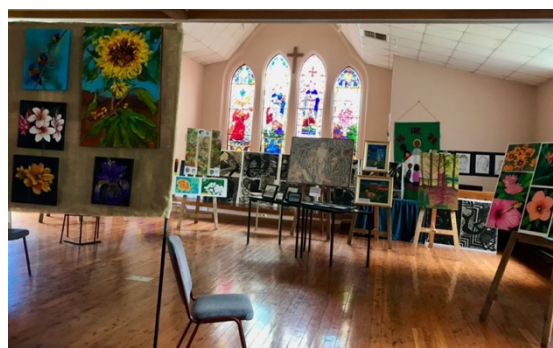
## “ART AT THE FAIR” (St David’s Uniting Church Fair) Nov 9<sup>th</sup>.

AWAS members are invited to exhibit paintings in the 1day Art-at-the-Fair exhibition at St David’s Uniting Church, Albury, Saturday 9th November. It will be hung in the chapel behind the church on Friday November 8<sup>th</sup>. We are using the AWAS portable screens and borrowing AWAS easels for the display. Bring your labelled artworks in to the studio: I will collect them in the afternoon of **WEDNESDAY 6TH NOVEMBER** and return them on Monday 11<sup>th</sup>.

The art display is intended for the enjoyment of those attending the fair. Visitors are asked to donate at the door. Any works for sale need to have details on the BACK of the artwork. No commission will be charged on painting sales that day. Works will be hung on Friday 8<sup>th</sup> November. Contact Kathy 0497 108 076.

Everyone is welcome to come and check out the Fair, be early if you want to buy any home-made cakes!

*The Art at the Fair exhibition in 2023.*



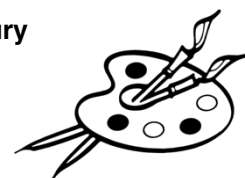
**ST DAVID’S UNITING CHURCH Cnr. Wilson & Olive Streets, Albury**

**30th ANNUAL Church Fair & Art Exhibition**

Saturday 9th November, 2024

FAIR OPENS 9.00 AM & CLOSSES 1.00 PM

Featuring: LIVE MUSIC RAFFLE DRAWN 12.30 pm



Craft displays, Art Exhibition, BBQ, Garage Sale, Bargain Centre / Op Shop, Goods & Services Auction (10am), Childrens’ Toys, Popular Music, Devonshire Teas/Sandwiches, Variety of Stalls incl. Plant / Produce Stalls, Books, Cake Stall, Raffle, Spinning Demo

## CHRISTMAS IS COMING!

- **AWAS Christmas arrangements:**

This year it will be at the studio, making use of the BBQ area behind the studio. 1<sup>st</sup> in gets the space, so we are having a painting day to claim the space!

**Please RSVP for the AWAS Christmas event, to be held at the studio December 5th (5-8pm.)**

**This is just so we know how much wine, beer, juice etc to supply for our members!**

**Contact the Secretary, Kathy.**

- **More Christmas at the Gateway:** Wodonga Council will be activating Gateway Village on **December 14, 2024 between 10am and 1.30pm** with a special Christmas themed event. This activation will run alongside a Flying Fruit Fly Circus aerial performance as part of the Borderville Festival in the Gateway Village Amphitheatre. Performance time for the Flying Fruit Fly Circus will be 11am with another performance in the evening at 6pm. They will also be performing Thursday and Friday. Please check out their website for further details <https://fruitflycircus.com.au/performances> "The Lions Club of Wodonga assisting with parking in the Circus site area, buskers, a DJ, food vans, decorating the area with bunting etc. *They ask us to help make the event alive with activity.* AWAS members need to be there, be painting or doing some type of art, even if we are not running an open workshop.

## AWAS STUDIO

- AWAS archives/scrap book. Please bring in appropriate photos (not computer print outs because they fade over time) to add to the records of AWAS events. Heather Green is coordinator.
- The AWAS First Aid kit is located in the kitchen on the shelf above the sink. If you use the equipment, please check that supplies of that item are not depleted and replace them.
- Free second-hand books and art materials are appearing in the studio. Make sure they are labelled clearly so they don't get confused with our precious library books or members' art equipment! If items are for sale, make sure the details are attached securely.

To do:

Come to the studio and paint!

Gather some artworks together for the 1 day "Art at the Fair" Nov 9<sup>th</sup>

Bring in works to hang in the studio Tuesday 12<sup>th</sup> November

Book in for the Portrait session Saturday 16<sup>th</sup> November

Register/Pay for the 1 day workshop with Graham Wade Friday 22<sup>nd</sup> November

RSVP for our Christmas event & register your EOI for the calligraphy workshop.

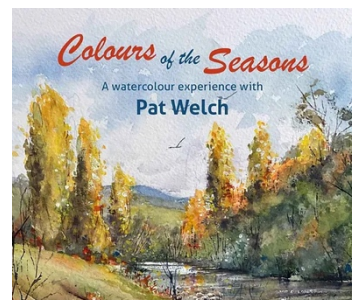
Mark Dec 5<sup>th</sup> AWAS painting day and AWAS Christmas 5-8pm in your diary.

Mark December 15<sup>th</sup> for a painting session in the studio while the Gateway is open to the public for the Christmas event.

Visit the other galleries at the Gateway: eg Pat Welch's Exhibition "Colours of the Seasons, Gateway Gallery (until 23<sup>rd</sup> Nov.)

Visit Wangaratta Artists Society 53<sup>rd</sup> Annual Exhibition (until 5<sup>th</sup> November)

Visit Seymour Artists Society Exhibition "Art Beyond the Divide" 29/11 to 1/12.



*Pat is inspired by the natural settings in and around the local area and blooms from her garden. This exhibition is all about the colours in the landscape as the seasons change through the year.*

# One-Day Workshop Enrolment Form Watercolour Resist technique “Rocks”

*Tutor: Graham Wade*

*Date: Friday 22<sup>nd</sup> November 2024*

Cost: \$90 - members & students. \$110 – non-members. Deposit: \$45 (or full payment if you prefer) due Friday 25th October Balance due Friday 8<sup>th</sup> November  
Expression of interest / commitment to this class - please contact Judy Balfour - 0439 953 903  
[jybalfour@outlook.com](mailto:jybalfour@outlook.com)

## YOUR DETAILS:

Name: \_\_\_\_\_

Phone: \_\_\_\_\_ Email: \_\_\_\_\_

Address: \_\_\_\_\_ PC \_\_\_\_\_

Payment: ☐ Deposit \$ \_\_\_\_\_ ☐ Full payment \$ \_\_\_\_\_

Payment Method: ☐ Cash ☐ Cheque ☐ Direct Deposit - Bank/Internet

Signed \_\_\_\_\_ Date: \_\_\_\_\_

*Please advise Workshop Co-ordinator ASAP and the Treasurer when you have made payment.*

Co-ordinator: Judy Balfour

Email: [jybalfour@outlook.com](mailto:jybalfour@outlook.com) Phone: 0439 953 903

Treasurer – Tony Smit [ajs48@bigpond.com](mailto:ajs48@bigpond.com)

## ***Mailing & Bank Account details for AWAS Payments***

Postal Address: The Treasurer, P.O. Box 1170, Wodonga Vic. 3689

*Mailing-Please include enrolment form and cheque*

*Please also mail or email enrolment form to the coordinator*

Electronic banking:

Account name: Albury Wodonga Artist Society

BSB: 640 000

Account Number: 111256122

***IMPORTANT information required when completing Internet banking transactions*** so that the Treasurer knows who has paid and what for:

***In the REMITTER part - put your NAME in as a reference on your payment***

***In the DESCRIPTION part – “GWJB”***