



ALBURY - WODONGA
ARTISTS SOCIETY

NEWSLETTER

PAINTBOX STUDIO/GALLERY
GATEWAY ISLAND, LINCOLN CAUSEWAY,
PO BOX 1170,
WODONGA, VICTORIA 3689

www.awartsoc.org
awas@awartsoc.org

VIC no. A0018404D

ABN 74817 556 011

OCTOBER 2023

Studio sessions		
Saturday 7 th October	Life Drawing 1 – 4pm	Contact: Olga 0447 770 735
Saturday 14 th October	Acrylic/Mixed Media group 10 - 4pm	Contact: Jill: 0412 477 804
Tuesday to Friday, Most Sat am. Sunday.	“Social group”. Paint / Chat. All members are welcome. Daily access for members.	Informal.
Meetings		
Wednesday 18 th October	General Meeting 12.30pm	Secretary: Kathy 0497 108 076
Other Events		
Tuesday October 10 th AWAS Plant Farm Exhibition Changeover	Hanging Exhibition 2.30 pm Wodonga Plant Farm Café. Theme: Interpretations related to “Temperature”	Contact: Tanya 0407 238 923 Contact: Jill: 0412 477 804
Friday 20 th October	Watercolour get-together at the studio.	Contact: Judy 0439 953 903
Studio Exhibition continues until next month.		Contact: Jill: 0412 477 804

AWAS MEMBERSHIP

A reminder to current members that the last day to pay renewals for this financial year is October 31st. This will allow you to continue free access to the studio, priority booking for workshops and monthly newsletters. If you miss that date, you will need to formally reapply for membership, filling out an application form!

Membership Renewals (\$100) were due July 1st

For all payments to AWAS :

Hume Bank BSB: 640-000 Account No: 111256122

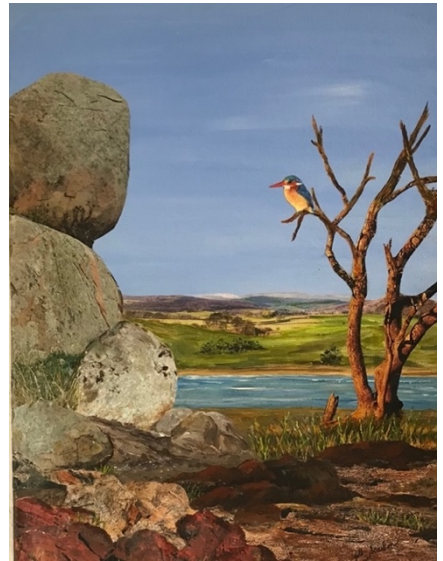
Cheques to: The Treasurer, Albury Wodonga Artists Society, PO Box 1170,
Wodonga. Vic. 3689. **AWAS Treasurer: Tony Ph: 0438 402 499**

ACRYLIC AND MIXED MEDIA GROUP

We meet on the **second Saturday of each month** at 10 am and we would love to see some more members join us. This is a social group. We bring our lunch and enjoy painting. However new blood and new ideas are always welcome! There is no cost involved, although the Farmers Market usually has coffee available.

AWAS WODONGA PLANT FARM EXHIBITION - this month

The new Exhibition at the café at Wodonga Plant Farm has the theme "Temperature". It will be interesting to see the variety of interpretations in this one. Bring your work in to the café, not before 2.30 on Tuesday October 10th. Be sure to have the label completed with the price and contact details on the back before you come.



Jill Scanlon. Mixed Media

STUDIO EXHIBITION - next month.

We need paintings for our next AWAS Studio exhibition to be brought in by **Tuesday November 14th** so they can be hung on Wednesday 15th November at 9.30am. There is no theme and the painting can be an old favourite. Label each painting on the back with your name, the medium, the title, the price and your contact details.

The current exhibition paintings therefore will need to be collected by Tuesday 14th November. When you collect your painting from the last exhibition, can you please "sign it out" on the form located on the table in the middle room? A new form will be put out on that table for the November exhibition.

Thank you to all those members who support our Studio Exhibitions, as we like to give members opportunities to exhibit and to encourage more members to contribute to them, as they showcase our love of painting!!

The November exhibition will remain throughout November and December.

Please encourage friends and relations to come and have a look!

Jill Scanlon



Heather Green. Acrylic

ANOTHER EXHIBITION - next month. ART AT THE FAIR

AWAS painters are invited to join with other artists in a **one-day exhibition "Art at the Fair" Saturday November 11th** at St David's Uniting Church in Albury. As I am coordinating the exhibition, I will take them from the studio Wednesday 8th to the Wesley Chapel (Wilson St) next to the church, then bring them back to the studio the following week after the Fair.

The emphasis is on the enjoyment of art, not sales, but put a price on the back in case there are interested buyers. Label your work "AWAS Art at the Fair" and your name and contact details. Why not come to the fair and buy some cakes, avocados, Devonshire tea....?


AT OUR STUDIO ON THE GATEWAY:

AWAS General Meeting. It would be great to see more members attend our Wednesday lunchtime meeting. This month we will discuss our Christmas event. Amazing. Already! Please let me know of any other agenda items you wish to be included in this month's General meeting Wednesday 18th October 12.30 pm.

Saturday October 7th. The Senior Celebrations in Wodonga have a walking tour of Gateway Village. It would be good to have some members doing artwork there that day 10- 12.30.pm (Before Life Drawing starting at 1pm).

Friday 20th October from 10am: Watercolour get-together at the studio, A follow-up from the Terry Jarvis workshop and anyone else interested. Beginners welcome.

OTHER ARTY EVENTS



Eclectic Mix
by Christina Zei

31 October to
18 November
2023
at Gateway Gallery

OPENING EVENT:
Friday
3 November
6-8pm

gateway gallery
an artist-run space

GATEWAY GALLERY
Lincoln Causeway, Wodonga, VIC
Phone: (02) 6021 3073
Tuesday to Saturday 10am-4pm
www.gatewaygallery.au
@gatewaygalleryau

Christina Zey has a solo exhibition at Gateway Gallery (formally GIGS) just over the lawn from our Gallery/workshop. Tues-Sat 10am to 4pm. You are invited to the opening on Friday 3rd November! 6-8pm.

Only this week to catch the **Bald Archies** at Corowa Civic Centre. It ends Sunday 8th. Some witty artworks there, using various painting styles and techniques. While in Corowa check out **Gallery 294**.

Urana Art Show is on 12th-15th October. You are invited to attend the opening Oct 12th at the Urana courthouse Museum 6pm.

Bright Art Gallery Spring Exhibition is on until 6th November. Thurs-Mon 10am to 4pm Mountbatten Ave, Bright.

ADFAS in Albury. A National lecture series on the arts-excellent speakers!
I recently went to an enlightening lecture on English Medieval Cathedrals and another on Japanese Gardens. The next one is about the influential Twentieth Century architect Frank Lloyd Wright. It will be held at La Trobe in Wodonga. Check the ADFAS website for details. \$25 per lecture.

Thank you Carol for making your place available for us to do some relaxing artwork early in September!
Absolutely beautiful views.
Hopefully other members will take up her offer to make her property available to artists interested in landscape painting nearby Wodonga.

