



ALBURY - WODONGA  
ARTISTS SOCIETY

# NEWSLETTER

PAINTBOX STUDIO/GALLERY  
GATEWAY ISLAND, LINCOLN CAUSEWAY,  
PO BOX 1170,  
WODONGA, VICTORIA 3689

www.awartsoc.org  
awas@awartsoc.org

NSW no. Y2486112

VIC no. A00184040

ABN 74817 556 011



DECEMBER 2018



## Dates for your Calendar!

Regular sessions/groups		
Sat 1 <sup>st</sup> December	Life Drawing session-usually 1 – 4pm, but this month 2.30-5.30pm	Coordinator: Olga Juskiw
Sat 8 <sup>th</sup> December	Acrylic/Mixed Media group 10 - 4pm	Coordinator: Jill Scanlon
Sat 15 <sup>th</sup> December	Portraits session 1 – 4pm Regular Wednesdays “social group” Paint/ Chat. All members are welcome.	Coordinator: J Hoban
Meetings		
Wed 21 <sup>st</sup> December	General Meeting 12 midday	Secretary: Kathy Bruce and Donna Johnstone
Social Events		
Friday 30 <sup>th</sup> November 5-7pm	AWAS Christmas celebration. La Maison, Gateway Village.	Coordinator: Meg Brown
Sunday 9 <sup>th</sup> December 3pm	<b>“A New Vision”</b> Exhibition Opening 3pm, AWAS Paintbox studio.	Coordinators: Kathy Bruce, Noni McClelland and Meg Sprouster.
<b>WODONGA PLANT FARM CAFÉ EXHIBITION</b> Changeover 4 <sup>th</sup> December.	“Christmas Specials”- under \$150. Changeover time: 2.30pm.	Coordinator: Tanya Healy
<b>SPECIAL AWAS STUDIO EXHIBITION: “A New Vision”</b> 4th – 19th December.	Official Opening: 3pm Saturday 9th December by Troy Gladwell, Vision Australia	Coordinator: Heather Green

For information contact details of the committee or co-ordinators, refer to the list at the end of this newsletter.

THIS PAGE IS A SUMMARY OF EVENTS DETAILED IN NEWSLETTER. PRINT JUST PAGE 1 AND PUT ON YOUR FRIDGE!

## OUR 2018/19 AWAS CCOMMITTEE

**President** – Les Langmead

**Vice President** – Terri Friesen

**Secretary** – Kathy Bruce

**Treasurer** – Tony Smit

**Committee members:** Doug Hoth, Andrew Donnelly, Donna Johnstone

Proudly supported by:

Wodonga City Council, Albury City Council, & Wodonga Plant Farm

### A Word from our President Les Langmead

I'm sure many of us have a mental 'syllabus' of skills we want to work on. I know I regularly walk out of life drawing muttering, 'I really must learn to draw hands'. As you think about the skills you'd like to develop, or if you've heard about a really good tutor, please contact anyone on the committee with suggestions for workshops. So far, the only one planned for next year is the Japanese brush painting workshop that Midori is organising.

A real good-on-you to Noni, Meg and Kathy for their involvement with Vision Australia. And to the artists themselves. I'm really looking forward to seeing their work. Do consider doing some of your painting in the studio between December 4 and 19 so that our Vision Australia exhibition can be open during that time. It is air-conditioned and it's a good way to put in some solid hours without all the distractions of home. Kathy's number is in this newsletter for you to let her know.

All the best for this Solstice, Christmas, New Year period. Whatever time of day you do your painting over the summer, enjoy.



### LOOKING AHEAD...

#### General meetings next year.

The committee are considering changing the time of our members meetings, mainly so our minute secretary, Donna, can attend, as she now works in Wangaratta! We are looking at either a morning meeting starting at 8.30 am, or an afternoon meeting at 4pm. Please think about these possibilities and how they could work for you. We will discuss these ideas at the **December 19<sup>th</sup> General Meeting (lunchtime at 12 midday)**.

#### Workshops.

Have you ideas for workshops next year? Over the break there are some Summer schools being held in different parts of the country, held by various educational institutions. If you attend one of these Summer Schools, or talk with someone who has attended one, be on the lookout for possibilities for workshops here at AWAS. If possible, ask the tutor their contact details and availability for 2019, then we can work out levels of interest with members and suitable dates.

### An Exhibition to remember! "FROM THE ARCHIVES" Exhibition November 1 – 31<sup>st</sup>

*We, the exhibitors to the "From the Archives" exhibition, would like to thank the president, committee, and all the members and friends who came to the opening afternoon, it was wonderful to see so many people renewing old acquaintances. We would especially mention "our Heather" for all she did to enable the whole thing, and Margaret Moran for coming up to do the honours.*

*Val Boulton, Sheila Maguire, Jeanette Pockley, Marilyn Forrest, and John Mason*





**Thanks to Heather Green, coordinator, for the organisation of a wonderful exhibition, and also the exhibitors, for the quality and diversity of the works on display.**

## ARCHIVES PHOTOS – Order yours!

Val Boulton has taken some lovely photos of our Official opening of “From The Archives” Exhibition. I have included two or three in the collage, previous page. She has them all displayed on the notice board in the studio, with a form to fill in identifying your order. Please try to order during the next week so she can get organised before Christmas. Any pictures you want in the collage above that are not amongst her display you can contact me for a copy.

## “A NEW VISION” EXHIBITION: AWAS Studio December 4<sup>th</sup> to 19<sup>th</sup>.

AWAS is hosting **The Vision Australia** Exhibition in December in our studio from Dec 4<sup>th</sup> to 19<sup>th</sup>. Noni McClelland, Meg Sprouster and I will be hanging the exhibition on Sunday December 2<sup>nd</sup> from 2pm. Please support this AWAS charity event: come along to the Official opening on Sunday December 9<sup>th</sup> at 3pm. The Vision impaired art group are enthusiastic- we are treating this as a trial run for an exhibition at MAMA! See the poster at the end of the newsletter.



*Vision Australia is the leading national provider of blindness and low vision services supporting people to live the life they choose. They help people achieve their life goals- in education, embarking on a career, being involved in everyday life and living independently.*

### How did AWAS become involved with Vision Australia?

A Vision Australia adult art group for the Visually impaired has been operating at Mirumbeena Community Centre in North Albury for several years. Jesse Farrugia, who happened to also be a member of Albury Wodonga Artists Society, was the tutor until she moved to New Zealand. Last year, on her recommendation, Troy Gladwell, Volunteer coordinator at Vision Australia in Albury, asked AWAS if anyone in our society was interested in volunteering to tutor the Vision art group one day a week. Members Noni McClelland and Meg Sprouster responded to the email forwarded to all members. I decided to team up with them as well. It has been a really wonderful experience for us all- we do a lot of chatting and eating as well as artwork. We have taken the approach to challenge them, to build confidence in their abilities: come and see the exhibition and see how they have risen to these challenges!

### How can you help encourage these Vision impaired artists?

- Come to the Official Opening on **Sunday December 9<sup>th</sup>**, 3pm.  
Troy Gladwell will be our official guest, to open the exhibition. Please bring a contribution to our afternoon tea and/or a bottle of wine!
- Donations to Vision Australia would be wonderful- we need to raise money to pay for the use of the room at Mirumbeena each week, and for art materials.
- Keeping the studio open **December 4<sup>th</sup> to December 19<sup>th</sup>**, the duration of the Vision exhibition. Plan a morning or afternoon painting time at the studio- put your name on the **roster** in the studio or let me know when you will be there (0260 255 913)

Kathy Bruce



## **“THE CHRISTMAS SPECIALS” Exhibition at the Wodonga Plant farm**

All the works at this exhibition will be priced at under \$150. Exhibition changeover happens at 2.30 pm on December 4<sup>th</sup>. Another chance to share a coffee or lunch at the Garden Gallery Café and wish fellow artists Merry Christmas.



**Merry Christmas from the AWAS members at our Christmas party at La Maison!**



## **OTHER ART EVENTS IN OUR REGION**

Open Studios Day Sat Dec 1<sup>st</sup> Yack Station, Yackandandah, Vic. A good place for creative Christmas gifts!

Wrenwood Farm Shop, Gallery and Nursery. 3091 Riverina Hwy, Bungowannah. Gift shop too!

MAMA, Albury. Margaret Sprouster- recent paintings. Come and support an AWAS member at MAMA. Opening Thursday December 6<sup>th</sup> 5.30 to 7pm. (free entrance).

Pfeiffer Wines Art Show 27<sup>th</sup> December 2018 - 26<sup>th</sup> January 2019. Theme: “My Favourite Thing”. Entries close 14<sup>th</sup> Dec. Max 3 entries. Info Ph 02 6033 2805

Corowa Federation Art Competition and Exhibition. Corowa Memorial Hall. Opening Friday January 4<sup>th</sup> 7.30pm.

Also check out other exhibitions on at MAMA Albury, GIGS, Creators and Artspace Wodonga.

## **January 2019 Life Drawing Workshop**

The 4 day Life Drawing will be held from Friday 4<sup>th</sup> January to Monday 7<sup>th</sup> January 2019. There will be 3 sessions daily on Friday, Saturday and Sunday – 9am to 12 pm, 1pm to 4pm, 7pm to 10pm. On Monday there will be only 2 sessions 9am to 12pm, 1pm to 4pm. Except for the evening sessions (7pm to 10pm) the cost will be \$15 for members per session and \$20 for non members. The cost of the evening session will be shared by those attending to cover the model’s fee of \$96.

I will organise a sheet with model’s names for each session in a week or so and will email this information to everyone. To book in you can email me the sessions you want to attend. It’s best to pay on the day of attendance with the correct amount please.

Regards. Olga Juskiw.

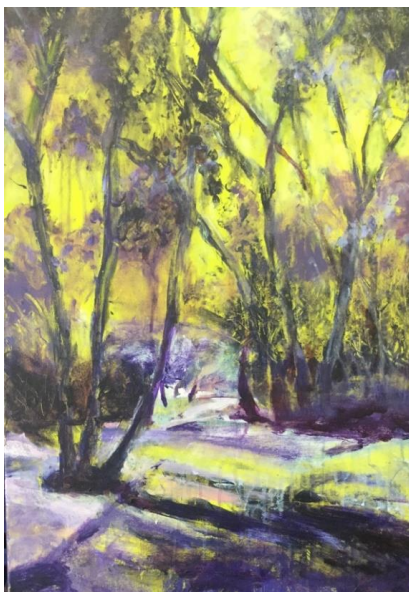
## March 19<sup>th</sup> 2019 SOCIAL EVENT/FRAMING DEMONSTRATION

*Finer Frames, 59 High Street, Wodonga. 5.30 to 7pm*

Finer Frames have invited us for another get together in their premises in Wodonga, 5.30 to 7pm. Drinks and nibbles will be supplied. We will be shown the best techniques to matt and frame a variety of types of artworks, as well as attaching hanging hooks, wires and cords. Conservation issues and other aspects of presentation will be discussed. To support local artists, they can also offer us an exhibition space in their shop. It is great to have the support of local businesses: Finer Frames also offers member discounts on framing of their artworks.

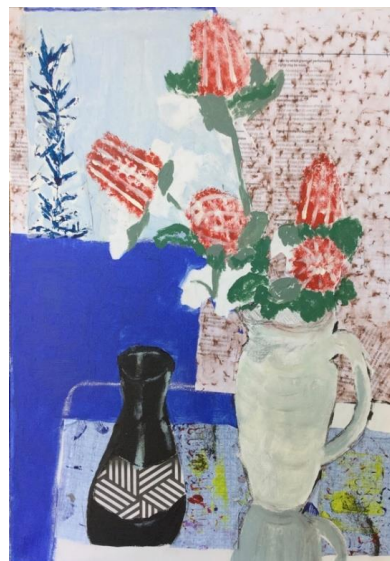
## Key Contacts

President	Les Langmead	Phone: 0429 959 605 Email: <a href="mailto:leslangmead@gmail.com">leslangmead@gmail.com</a>
Vice President	Terri Friesen	Phone: 0260 255 366, 0402 732 654 Email: <a href="mailto:johnterrifriesen@gmail.com">johnterrifriesen@gmail.com</a>
Secretary	Kathy Bruce	Phone: 02 6025 5913 Email: <a href="mailto:kathleenbruce@bigpond.com">kathleenbruce@bigpond.com</a>
Treasurer	Tony Smit	Phone: 0438 402 499 Email: <a href="mailto:ajs48@bigpond.com">ajs48@bigpond.com</a>
Committee Members	Doug Hoth  Andrew Donnelly  Donna Johnstone	Phone: 0260 244009 Email: <a href="mailto:wmbay@bigpond.com">wmbay@bigpond.com</a> Phone: Email: <a href="mailto:horizoncity@yahoo.com">horizoncity@yahoo.com</a> Phone: 0411 229 437 Email: <a href="mailto:johnstonedonna@gmail.com">johnstonedonna@gmail.com</a>
Newsletter Editor	Kathy Bruce	Phone: 02 6025 5913 Email: <a href="mailto:kathleenbruce@bigpond.com">kathleenbruce@bigpond.com</a>
Website Editor	Barb Strand	Phone: 0412 688 507 Email: <a href="mailto:martinstrand@westnet.com.au">martinstrand@westnet.com.au</a>
Life Drawing	Olga Juskiw	Phone: 0447 770 735 Email: <a href="mailto:olga.juskiw@icloud.com">olga.juskiw@icloud.com</a>
Acrylics and Mixed Media	Jill Scanlon Judy Balfour (tutored workshop)	Phone: 0412 477 804 Email: <a href="mailto:kevin.scanlon@bigpond.com">kevin.scanlon@bigpond.com</a> <a href="mailto:jybalfour@outlook.com">jybalfour@outlook.com</a>
Portraits	Janelle Hoban	Ph: 0401 919 813 Email: <a href="mailto:janellehoban40@gmail.com">janellehoban40@gmail.com</a>
Watercolour	Jen Wallace	Phone: 0428 264 801 Email: <a href="mailto:jwallace@westmontres.org.au">jwallace@westmontres.org.au</a>
Plant Farm Exhibitions	Tanya Healy	Phone: 02 6056 2869 Email: <a href="mailto:tanyakerr188@gmail.com">tanyakerr188@gmail.com</a>



## “A New Vision”

An exhibition of paintings by the Vision Australia Artist's Group. Their paintings are alive with a joy in colour and pattern, luscious paint and textures and an appreciation of the world around them.



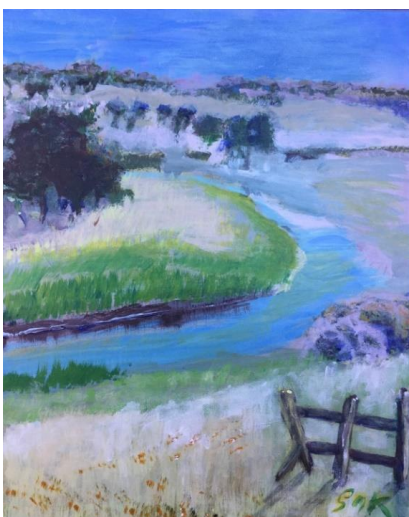
**Albury Wodonga Artists Society Paintbox Studio,  
Gateway Village,  
Wodonga.**

**DECEMBER 4th –19<sup>th</sup>**

**10am to 4pm**

*(Closed Mondays)*

**Official Opening  
Sunday, Dec 9<sup>th</sup> 3pm**



**A partnership  
between -**



**Vision Australia**

Blindness. Low Vision. Opportunity.

&

**ALBURY - WODONGA  
ARTISTS SOCIETY**

