



Dates for your Calendar!

Regular Groups		
Every Tuesday	Oils – 10am – 4pm (and others)	Co-Ordinator: Kata Kupresak
Sat 3 rd June	Life Drawing 1 – 3pm	Co-ordinator: Olga Juskiw
Sat 10 th June	Mixed Media 10am – 3pm	Co-ordinator: Kathy Bruce
Sat 17 th June	Portraits – 1 – 3pm	Co-ordinator: Elsie Reitenbach
Meetings		
Wed 19 th July	Committee Meeting 8.30am	Secretary: Christina Zey
Sun 14 th June	General Meeting 12.30pm	Secretary: Christina Zey
Workshops		
Portraits - in November; date and details to be finalised	Tutor: Catherine Hamilton	Co-ordinators: Elsie Reitenbach and Kathy Bruce
Watercolour 7 th – 8 th October	Tutor: Malcolm Beattie	Co-ordinator: Jen Wallace
Other		

For information on how to contact co-ordinators or Secretary, refer to the list at the end of this newsletter.

A Word from our Vice President

Don't forget our new theme ART WITH A VIEW, with paintings due at the Plant Farm on June 6th.

A busy time is about to happen in June. There is a General meeting on Wednesday 14th June at 12.30. Apart from the meeting, you can come along and enjoy sandwiches provided by AWAS. Also bring a painting for a SHOW and TELL event in the afternoon.

There is such a thing as a FREE lunch!

Our exhibition at MAMA is fast approaching, with forms emailed out by Kathy Bruce already. There is a cost of \$20 per work, and our AWAS funds will subsidise the Gallery costs. So please attempt a White Light painting. Just to keep you in the loop, the form and \$20 must be paid by 30th June and your painting brought to the studio by 26th July. The exhibition is from 3rd August until 10th September. Have a go at producing a painting for our exhibition at MAMA, as we are lucky to have the opportunity to show our work in a regional gallery.

You may feel we are repeating this information, but as long as you get the message, that is all that matters!

Heather Sparks

Spotlight On..... Heather Sparks

Apart from family commitments my life has evolved around the arts, from teaching to painting and the area of community arts.

I enjoyed art at school and had a very inspiring art teacher at high school. I think my interest in colour and design developed in this period where we were using gouache, which I still enjoy working with.

After leaving school, I was fortunate to gain a scholarship and spent 4 years at the National Arts School and Alexander Mackie Teachers' College in Paddington, where we were training to become High School Art teachers. It was a great course, very thorough, with many artists taking classes, and the atmosphere of the old Darlinghurst Gaol where we worked was something special.

Our subjects included life and general drawing, oil painting with time spent indoors doing still life and compositional work and outdoors painting landscape and aspects of the city. Etching, serigraphs (silk screening on paper) and printmaking on fabric were also included. I was not doing sculpture but part of the course was ceramics, which really came in handy when faced with various kilns to fire later on. I also enjoyed working on the wheel and learning about glazing.

As \$21.00 was all I received fortnightly as my scholarship, I had to live at home and travel across Sydney to Darlinghurst. Sometimes I went by bus but mostly I would travel by the Manly ferry, where fellow travellers would find the large boards I was carrying a bit of a novelty.

Finally, we were flung all over the state into teaching positions in 1970 and I landed in Yass for a couple of years, living on a farm where I still visit and paint. From there I moved to the coast and found myself in



charge of a large art dept. in Corrimal High in Wollongong. The students were great and recently I met up with one of them in Melbourne, who is also teaching art. Now married, Max and I moved to Albury Wodonga where I was offered an art teaching position at The Scots School in 1974. There I stayed for 11 years, primarily as department head, thoroughly enjoying it and fulfilling my enthusiasm for working with country kids in a boarding school. I also taught at the fledgling Riverina College (Charles Sturt Uni) in art and photograph



Another part of my art world was 'Settlers Art Store' which Max and I operated for almost 20 years supplying art materials to schools throughout NSW and VIC. We lived in Beechworth for 27 years before moving to Wodonga. During this time, I entered many exhibitions and was involved with several community projects, the largest being THE BICENTENNIAL TAPESTRY in the TOWN HALL.



I joined AWAS in 2003 when it was held in the Jenny Craig Building in Albury with the only disadvantage being the parking inspector! I have continued to assist with leadership roles in all of the places I have lived in.

I have been fortunate to win a few prizes including the King Valley Oil Prize in 2014 and sell some works over the years. However, it is the support of members and past students that has provided me with the most satisfaction.

Studio News

Please bring paintings to the studio to hang yourself. The walls are looking very bare - it doesn't matter if the works have been hung before at the studio or the Plant Farm. We desperately need some colour on the walls; we need the studio to look alive and inviting to us as well as visitors.

There is a notice beside the air conditioner in the studio indicating the temperatures for summer and winter. These are the optimum and most economical temperatures to operate the unit – Summer 21°C and Winter 23°C. Please do not raise the temperature, as even a degree or two greatly increases the cost and AWAS has to pay the bill. Your co-operation complying with this request will be greatly appreciated.

Plant Farm News

Our next exhibition, "Art with a View" will be hung on Tuesday 6th June.

The following suggestions were published last month but if you haven't done a painting yet maybe this could be your project for this week.

This sort of topic allows for your imagination to consider different subjects and the placement of foreground subject matter with possible views out the window, through archways, framing by gardens, arcades or street scenes and so on.

You could try using mixed media, some painting combined with collage or montage.

Experiment, and try working outside your comfort zone!

PLANT FARM EXHIBITION DATES

6th June – 8th August "Art with a View"

8th August – 10th October "Faces and Figures"

10th Oct – 5th December "Interiors"

5th December – 5th February "Art Bargain Sale"

Please bring your work to the Plant Farm or ask someone to bring it for you – 2.00pm. Also, ensure the proper hanging equipment is used. Put the \$2.00 entry fee in an envelope labelled with your name and attach it to the back of your painting.

Saturday Studio Groups

Contact the co-ordinator of the group for further information – names and contact details are provided later in this newsletter.

Life Drawing is held from 1pm – 4pm on the first Saturday of the month; this month the 3rd June. There is a small charge to cover the hiring of the model. The co-ordinator is Olga Juskiw.

Mixed Media – We have had a disappointing response to this Saturday Group, so we need the support of members. This replaced the Acrylic Group and we envisaged extending (maybe challenging) members to try something new as well as enjoying the company of colleagues. It doesn't matter which media you prefer

and you may like to just do some exercises, trialling new ideas. Of course, members are welcome to just come and paint your own thing. Kathy Bruce is the co-ordinator. Next Acrylic / Mixed media (or paint whatever you like) day is 10th June. The two or three members who have been attending would love some company.

Portraits is held on the third Saturday of the month from 1pm – 4pm; this month on 17th June. Some members who regularly participate come at 10 o'clock and make a day of it. There is a small charge for the hiring of the model. Elsie Reitenbach is the co-ordinator.

Exhibition News

NGV – Van Gogh and the Seasons – until 9th July.

Chiltern Art Award – opening Friday 9th June at 7pm, closes 12th June. (Entries close 26th May)

Camberwell Rotary Art Show – Swinbourne University, Hawthorn Opening night 7th July (\$55) exhibition closes 16th July.

St. Augustines Art Show – from 18 -20th August

Holbrook Rotary Art Show – 28th August – 2nd September. Entry forms are not available yet. Remember people from Holbrook will collect paintings from the studio and will also collect from St Augustines when their show closes.

Kathy Bruce does a wonderful job sending out the emails that AWAS receives and so further information about the exhibitions, (usually with entry forms) that are listed above have been emailed to you.

Tutored Workshops

These workshops run for two days on a weekend and the tutors are professional artists. They are paid for the tuition and expenses.

We have a change of plans for one of the two remaining workshops for 2017.

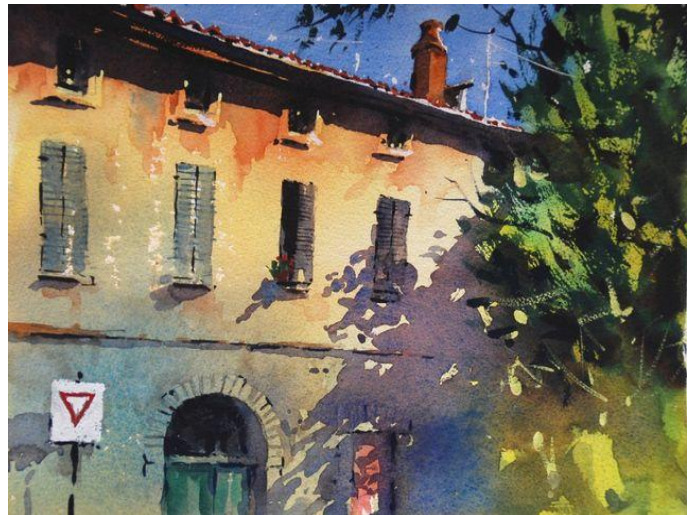
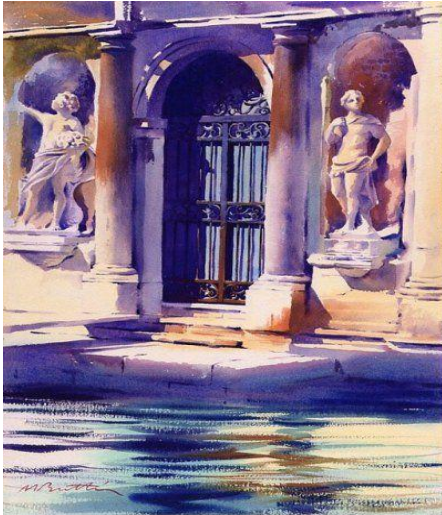
PORTRAITS – Tutor: Catherine Hamilton

In response to requests from a few members we will be running a drawing portrait workshop with Catherine Hamilton in November. Hopefully Paul McDonald Smith will be available early in 2018. Details are being finalised and should be available to publish in the July newsletter.

WATERCOLOUR – 7th – 8th October -Tutor: Malcolm Beattie

We have had an excellent response to the Watercolour Workshop scheduled for 7th and 8th October 2017. Thank you to the 13 people have paid, either in full or a deposit. So, workshop is full and going ahead as planned.

If you would like to go on a waiting list, email/ring Jen. We sometimes have someone who cannot attend because of unforeseen circumstances.



Co-ordinator: Jen Wallace

Workshop Report

The Language of Colour-A workshop with Catherine Hamilton



Several of the eleven participants had attended Catherine's Innovative Pastels workshop in 2016. During this workshop, Catherine's knowledge of colour became apparent. So, it was with great expectations and excitement that we anticipated her second workshop at The Paintbox Studio. Catherine commenced the workshop by sharing the simple, "Colour Bias" system of understanding colour that was developed by Michael Wilcox many years ago. Instead of there being three primary colours – red, blue and yellow there are six colours – two reds, two blues and two yellows. This was a completely new way of thinking about colour for most of us.

L: Blocking in, darks in first. R: Completed landscape – only three colours were used.



Proudly supported by:

Wodonga City Council, Albury City Council, & Wodonga Plant Farm

Throughout the morning, we were guided to mix paint and taught to “think like a chemist” as we concocted many colours from only three tubes of paint. Catherine explained how using a limited palette ensures colour harmony in the painting. We were shown how to manage a paint puddle (no mean feat) and create a running palette.

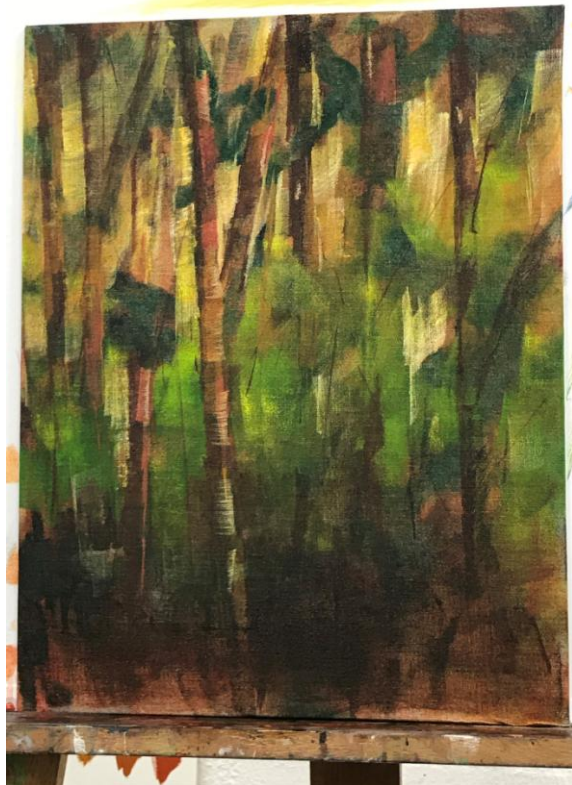
Then, it was on to learning about composition and principles of painting, by following Catherine through a demonstration. Only three colours were used – Phthalo Blue, Cad Yellow Medium and Quinacridone Magenta. Working on our paintings, we came to see the beauty of using a limited palette to create colour harmony ourselves. Most participants used acrylic paints, although we were welcome to use gouache or water based oil paints. Although pastel was not recommended for the workshop, the understanding of colour that Catherine teaches can be of great benefit to pastel painters also.

As we painted, Catherine entertained us with funny stories, to stop us from thinking too much and helping us to be “in flow.” Catherine is a very patient, knowledgeable and practical teacher. Her aims are to foster confidence in her students and to encourage improvisation.

Catherine finished her two-day workshop by completing a painting using a long-handled roller and twigs. This demonstration exemplified her philosophy of play and experimentation. It was also an exciting note on which to end this powerful and thoroughly enjoyable workshop.



Catherine executing a quick roller painted landscape. The painting is not quite finished – a bit more detail to finish it off.



MAMA Exhibition

The AWAS exhibition at MAMA will be held from 3rd August to 10th September. While this may seem a way off, (especially if you haven't started, or are doing, a painting) time is flying. **Entries are due on 30th June** (the form has been emailed by Kathy Bruce and is also at the end of this newsletter).

You may either post the form to – Albury Wodonga Artists' Society P.O. Box 1170 Wodonga Vic 3689 (allow time for Australia Post!); or place it in the Treasurer's Folder at the studio.

The **entry fee of \$20 is to be paid by 30th June** as well - it is preferable that this be paid by electronic transfer or by cheque. No cash.

Paintings are to be brought to the studio on **Wednesday, 26th July** suitably wrapped and labelled.

Australian Decorative and Fine Arts Society (ADFAS)

The next ADFAS lecture will be held at the Hothouse Theatre, Gateway Village on 30th June 6.00 – 7.30pm.

"Wine, Women and Song – Dutch genre Painting by Vermeer and his Contemporaries"

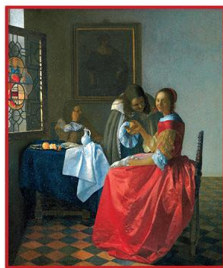
Our lecturer will be Sophie Oosterwijk.

Friday 30th June

DR SOPHIE OOSTERWIJK

**WINE, WOMEN AND SONG
DUTCH GENRE PAINTING BY VERMEER
AND HIS CONTEMPORARIES.**

On the surface, 17th century society in the Dutch Republic might strike modern viewers as staunchly Calvinistic, especially in portraits of merchants and dignitaries with their wives, all in stern black outfits and stiff white collars. Genre paintings are often described simply as scenes of everyday life, but there is usually more to them than that. Scenes by Johannes Vermeer and his contemporaries, while seemingly above reproach with their sense of respectability, often allow the viewer a hint of something rather less proper.



Sophie was born in Gouda (Netherlands) and studied English at Leiden and Medieval Studies at York before obtaining two doctorates in Art History (Leicester) and English Literature (Leiden). She taught Art History at the universities of Leicester, Manchester and St Andrews, and returned to the Netherlands in 2011 to work on the Medieval Memoria Online project at Utrecht University. Sophie is actively involved in the Church Monuments Society and has been published widely on this topic. She is also a free-lance lecturer for the University of Cambridge, NADFAS (National Association of Decorative and Fine Arts in Britain, the V&A Museum in London, and a number of art tour companies. She is affiliated as an Honorary Research Fellow with the School of Art History at the University of St Andrews.

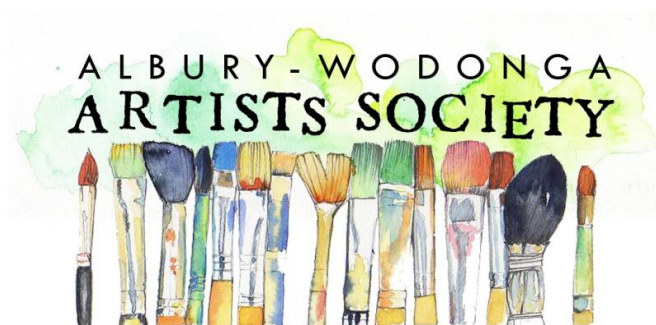
As you can see again, the lecturers for ADFAS are highly qualified, specialised and respected in their particular field of the arts. This promises to be a very interesting topic as we are so familiar with the paintings of this period. Come along and learn more as well as having an enjoyable evening that begins with drinks and nibbles prior to the lecture which begins at 6.30. Cost \$25 – no need to book, just pay at the door. For more information about ADFAS contact Judy Balfour at 0439 953 903 or jybalfour@outlook.com

Art Quote

“Painting is easy when you don’t know how, but very difficult when you do.” – Edgar Degas

Key Contacts

President	Barb Strand	Phone: 0412 688 507 Email: martinstrand@westnet.com.au
Vice President	Heather Sparks	Phone: 02 6059 5306 Email: heathersparks@exemail.com.au
Secretary	Christina Zey	Phone: 02 6040 0045 or 0410 511 211 Email: cristina2zei@gmail.com
Treasurer	Linda McMaster	Phone: 02 6041 1845 Email: allanlin@bigpond.net.au
Newsletter Editor	Judy Balfour	Phone: 02 6043 3169 0439 953 903 Email: jybalfour@outlook.com
Website Editor	Barb Strand	Phone: 0412 688 507 Email: martinstrand@westnet.com.au
Life Drawing	Olga Juskiw	Phone: 02 6021 8693 Email: olga.juskiw@icloud.com
Mixed Media	Kathy Bruce	Phone: 02 6025 5913 Email: kathleenbruce@bigpond.com
Portraits	Elsie Reitenbach	Phone: 02 6059 6298 Email: rreitenb@southernphone.com.au
Watercolour	Jen Wallace	Phone: 02 6026 4800 Email: jens@bigpond.net.au
Oils	Kata Kupresak	Phone: 0412 766 313 Email: kkupresak@hotmail.com
Plant Farm Exhibitions	Heather Sparks	Phone: 02 6059 5306 Email: heathersparks@exemail.com.au



ANNUAL MEMBERS' EXHIBITION 2017
AT MAMA - "WHITE LIGHT"
3 August - 10 September

ENTRY FORM

- 1 Please complete and return your entry form to AWAS PO Box 1170, Wodonga, Victoria 3689
OR place it inside the Treasurer's folder at the Studio by **30 JUNE**.
 (No late entries)
- 2 Pay your \$20.00 entry fee by cheque or electronic transfer (details below) by
30 JUNE (deadline). **NO CASH ACCEPTED.**
Account Name: Albury Wodonga Artists Society
BSB: 063 534
Acc No: 00903179
- 3 Deliver your painting to the AWAS Studio on **Wednesday 26 July**.
 Framed works or unframed canvasses, 1 metre square is the maximum size.
 Please ensure you add Title, Medium, Price, Name on the back of your painting.

30% commission on all sales to MAMA.

.....↔cut

Artist Name _____
 Artist Address _____

 Contact Telephone _____
 Contact Email _____

TITLE	MEDIUM	DIMENSIONS	PRICE \$	FEE PAID
				DD/Cheque