



ALBURY-WODONGA
ARTISTS SOCIETY


NEWSLETTER

PAINTBOX STUDIO/GALLERY
GATEWAY ISLAND, LINCOLN CAUSEWAY,
PO BOX 1170,
WODONGA, VICTORIA 3689

www.awartsoc.org
awas@awartsoc.org

DECEMBER, 2016

Dates for your Calendar!

Regular Groups		
Every Tuesday	Oils – 10am – 4pm (and others)	Co-Ordinator: Kata Kupresak
Sat 3 rd Dec	Life Drawing 1 – 4pm	Co-ordinator: Olga Juskiw
Sat 10 th Dec	Acrylic Group 10am – 4pm	Co-ordinator: Nancy Robinson
Cancelled for Dec	Portraits – 1 – 4pm	Co-ordinator: Elsie Reitenbach
Meetings		
Wed 7 th Dec	Committee Meeting 8.30am	
Workshops		
Fri 6 th – Mon 9 th Jan	4 Day Life Drawing	Co-ordinator: Olga Juskiw
Other		
 Christmas Party	Fri 9th December 5.30pm – 7.30pm at the Wodonga Plant Farm (nibbles and drinks)	Co-ordinator: Heather Sparks

For information on how to contact co-ordinators or Secretary, refer to the list at the end of this newsletter.

A Word from our Vice President

Both President Barb and I have been away throughout November, and left AWAS in the capable hands of Judy Balfour who has also managed to produce this Newsletter and run the Library!

The Annual Show is now hanging in the studio, and thanks must go to Christina Zey, Kathy Bruce and Tanya Healy for curating it and hanging all the works. Rod Farr organised the screen and the banner; and Christina the poster featuring John Mason's painting, which is most appropriate.

The only disappointing aspect of the exhibition was the lack of work. 19 artists put in 31 paintings and as we have over 90 members, our annual show could have reflected the talent of a few more.

On a lighter note, don't forget the Christmas get together at the Plant Farm. December...5.30 7.30pm. Please add your name to the big list at the studio or contact me before next

Wednesday, 30th November. heathersparks@exemail.com.au or phone 02 6059 5306 We need numbers for the catering.

Please remember to bring work to the Plant Farm on Tuesday 6th December at 2.30. The theme is Little Gems and must be \$150 or under. This doesn't mean they have to be small paintings. It will be on until Tuesday 7th February, 2017.

Keep up the brush mileage,

Regards,

Heather Sparks.

Membership

Membership, \$100 was due in October. If you haven't attended to this, please pay as soon as possible so we can update our Membership List and to ensure you receive the newsletter and any other information.

I owe a very big apology to anyone who posted their subs as I had the AWAS Post Box number incorrect in the last newsletter. The address is: **P.O. Box 1170 Wodonga 3689**

Payments can be made directly to our bank account:

Bank details: BSB: 063 534 Account No: 00903179

You must include your name (see below)

Note from our Treasurer –

"I am very happy to be your Treasurer again and am very pleased to see that Membership Fees are now coming in.

However there is a "slight" problem in that two members didn't attach their names to their payments. One was from an account at the WAW Credit Union and I have absolutely no idea who the other one was from. So obviously, no receipts have been written for these two.

Please get in contact with me if you think either one could be you.

My phone numbers are:

Mobile: 0400 997 776

Home: 60411845

Cheers

Linda"

If you have change of details - phone number/s; e-mail or home address – please notify our Treasurer, Linda McMaster: allanlin@bigpond.net.au or 02 6041 1845; or in writing to our P.O. Box 1170 Wodonga 3689

Christmas Party



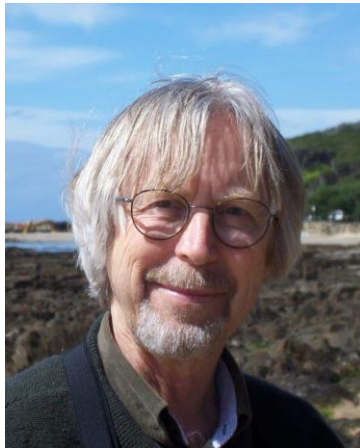
Friday, 9th Dec at the Plant Farm \$20 per head Members only. 5.30 – 7.30.

Come along to a great social event, chat with friends and celebrate the year with a glass of champagne and nibbles. Tea and coffee will be available @\$3.00. Please pay \$20 (cash) at the door.

If you wish to come (and haven't put your name on the list on the noticeboard at the studio) please contact Heather Sparks ASAP as we need to know numbers for catering. The Plant Farm has been booked for our exclusive use at this time. Heather's contact details are:

Phone: 02 6059 5306 or email heathersparks@exemail.com.au

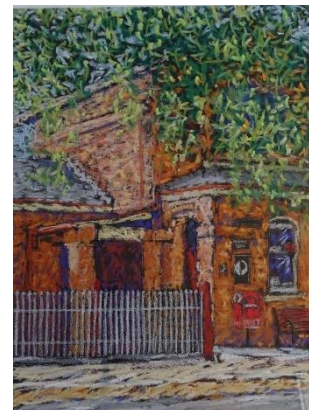
Spotlight On..... Colin Lawrence-Parnaby



I joined AWAS about 2 years ago, shortly after taking a voluntary redundancy from the ATO. Before embracing the warm furry arms of the Public Service I completed a Fine Arts Diploma in 1979 at what was then the Riverina College of Advanced Education in Wagga Wagga majoring in sculpture with minors in photography and drawing. On completion of the diploma I worked as a picture framer for a couple of years and taught art and picture framing classes at the Community Education Centre (CEC) in Wodonga, School for Seniors and Albury TAFE. Part-time teaching was not that lucrative and with a mortgage to pay I reverted to a previous life where I worked as an accountant and joined the ATO in 1988. I also returned to an accountancy course I had left unfinished to pursue the Fine Arts Diploma. A semester or two of accounting made me realise why I had given it up in the first place (extremely boring) so I swapped over to the Management degree and actually completed it in 1993.

In 2014, about 4 years away from retirement, the government of the day decided there were too many taxation officers and offered voluntary redundancy packages. When I did the sums, I was actually

better off financially by leaving so it really was a 'no brainer'. Stay with the ATO or leave and make art - something I had been wanting to return to for the past 26 years. Not a difficult decision.



better off financially by leaving so it really was a 'no brainer'. Stay with the ATO or leave and make art - something I had been wanting to return to for the past 26 years. Not a difficult decision.

Within a few weeks of retirement, I had joined both AWAS and the 'Buds' art group at Thurgoona where I live. I had always preferred drawing so I started to 'get back into it' using charcoal and then coloured pencils.



I then ventured into acrylic paints but when summer came along and the paint started drying on the palette before I could use it I tried soft pastels. I love using them and have been using them ever since. My subject matter is fairly diverse – street scenes, rusty old cars, landscapes and people. Having spent a couple of years as a picture framer has come in handy for framing my own work at a fraction of what it would normally cost.

I've made some wonderful friends at both AWAS and Buds and look forward to spending time each week with those my wife calls my 'Thursday girlfriends'.

Studio News

"The Annual Members' Exhibition" will be hanging in the studio until Monday 30th January. Please come to the studio on that day to collect an unsold work.

The February exhibition will be works from the 4 Day Life Drawing Workshop.

At the Committee Meeting on Wednesday, 7th December the matter of having exhibitions at the studio will be decided. We would like to see a much broader response from members for these exhibitions. As we have 90 members we really have a minority of the membership availing themselves of this opportunity.

Plant Farm News

"Little Gems" will on show at the Plant Farm until Tuesday 31st January.

The details of the February exhibition will be published in the January edition.

Life Drawing Workshop

4 Day Life Drawing in January 2017. Untutored.

This will be on Friday 6th, Saturday 7th, Sunday 8th and Monday 9th January. Cost is \$30 per day for members, \$40 for non-members, \$20 for students. This is for a full day starting promptly at 10 am and finishing at 4pm. There will be breaks for the model and a lunch break (BYO lunch, afternoon tea will be provided). There are no half day rates. You can attend on any or all the above dates. Booking sheets

for each day will be up on the wall in AWAS studio early in December. Please put your name down on these sheets if you are attending and do so early in December as it depends on the numbers attending whether we can run this program or whether we may have to cancel a day. Last January we had a great turnout. BYO art materials, easels and boards are available. Please arrive early on the day to set up your easel and materials so we can start promptly. Watch out in the AWAS newsletter for dates for our follow-up 4 Day Life Drawing Exhibition at AWAS Studio. We had this in 2016. This is a casual exhibition of drawings (framed or unframed) that were done during the 4 Day Life Drawing. These drawings can be quick sketches, studies of parts of the anatomy, experimental drawings and more finished ones. These drawings must have been done in the studio during the 4 day sessions and not at home as they are to show the results of the workshop. Each person can submit 3 or 4 drawings. There will be more details about this exhibition later.

Saturday Painting Groups

Life Drawing and Portrait Saturday Groups

There have been a few problems with these groups in 2017 because some of them have been very poorly attended. The Life Drawing and Portrait groups must have a sufficient number of attendees to cover the hiring of models.

Below is a suggestion from Olga (Life Drawing Co-ordinator)

“Regarding the monthly life drawing: Due to low numbers attending and the cost for the model is not being covered, we may have to change the monthly life drawing to every second month, maybe alternating with portrait drawing e.g. Life drawing one month and portrait the second month. Attendance has been deteriorating for a few months now and it may not be viable to continue at the current rate. Life drawing in December will be as normal and hopefully the attendance will improve and then we can decide the future of life drawing this session.”

SUGGESTIONS PLEASE – If you have any suggestions / ideas about either Life Drawing or Portrait sessions please contact a committee member before the next Committee Meeting which will be held on Wednesday, 7th December. We really need input from members.

Acrylics Saturday Group

This group has had better attendance most of the time but there has been a change of plan for 2017. The group will now be called the Mixed Media Group which means you can use any medium / media and we are hoping to experiment and have a lot of fun. Kathy Bruce is the co-ordinator of Mixed Media so please contact Kathy if you have any suggestions/ ideas to contribute. We hope by widening the scope of this Saturday group we will see more members.

These Saturday Groups provide important activities for our members to acquire skills, extend themselves (maybe into areas of work not tried before) and of course, to meet and socialise with others. So, make 2017 the year when you come along to these groups and have enjoy yourself in the company of colleagues

Watercolour Workshop Report – Still Life with Julie Goldspionk



Wow! What a fabulously informative workshop. We all thought we knew a bit about “still life” as a subject matter. Julie Goldspionk gave us a whole new perspective on “still life” and how to create a successful still life painting. Julie also reinforced when and how to use watercolour techniques to ensure a vibrant and light filled painting.

Julie explaining the finer points of arranging a Still Life. The examples pictured here clearly show the impact of using a complimentary colour



Key learning's:

- Setting up is as important as the painting
- Painting composition should be incorporated as a key part of the setting up of the still life
- Select objects that create a mood or theme for your painting
- Make sure that objects complement one another in size and proportion (scale)
- Ensure drawing reflects correct scale and proportion of objects (use visual diary for initial drawings)
- Vary and select a viewpoint that creates and emphasizes a focal point
- Use a complimentary a colour scheme for maximum impact
- Have fun!!

Painters assisted in setting still life arrangements that varied from soft and feminine to strong and vibrant and in-between. They also provide many of the flowers and objects that Julie used in the different arrangements. While Julie demonstrated using one arrangement we could select our own to paint and apply Julie's teachings.

It was a very enjoyable and informative workshop with the participants extremely happy with their painting efforts and Julie's fun and quality teaching method.

Thank you to everyone for their contributions to morning tea and shared Sunday lunch. There was a lot of good camaraderie and fun amongst the group. Congratulations to those painters who attended their 1st workshop.



On the left is Julie's setup and on the right, is her painting



Cheers and happy painting! Jen

Exhibitions

Archibald Prize - moves from Ballarat, closing Nov 27th, to Wagga Wagga Dec 2nd to 15th January.

Bright Summer Exhibition – Bright Art Gallery. Sat 26th November – Mon 30th January.

Corowa Art Show – Corowa Memorial Hall. Friday 3rd - Mon 30th January.

Art Quote

“A painting is never finished – it simply stops in interesting places.” Paul Gardner

Key Contacts

President	Barb Strand	Phone: 0412 688 507 Email: martinstrand@westnet.com.au
Vice President	Heather Sparks	Phone: 02 6059 5306 Email: heathersparks@exemail.com.au
Secretary		Position vacant
Treasurer	Linda McMaster	Phone: 02 6041 1845 Email: allanlin@bigpond.net.au
Newsletter Editor	Judy Balfour	Phone: 02 6043 3169 0439 953 903 Email: jybalfour@outlook.com
Website Editor	Barb Strand	Phone: 0412 688 507 Email: martinstrand@westnet.com.au
Life Drawing	Olga Juskiw	Phone: 02 6021 8693 Email: olga.juskiw@icloud.com
Mixed Media	Kathy Bruce	Phone: 02 6025 5913 Email: kathleenbruce@bigpond.com
Portraits	Elsie Reitenbach	Phone: 02 6059 6298 Email: rreitenb@southernphone.com.au
Water Colour	Jen Wallace	Phone: 02 6026 4800 Email: jens@bigpond.net.au
Oils	Kata Kupresak	Phone: 0412 766 313 Email: kkupresak@hotmail.com
Studio Exhibitions	To be decided	
Plant Farm Exhibitions	Heather Sparks	Phone: 02 6059 5306 Email: heathersparks@exemail.com.au