



ALBURY - WODONGA
ARTISTS SOCIETY

NEWSLETTER

PAINTBOX STUDIO/GALLERY
GATEWAY ISLAND, LINCOLN CAUSEWAY,
PO BOX 1170,
WODONGA, VICTORIA 3689

www.awartsoc.org
awas@awartsoc.org

NOVEMBER, 2016

Dates for your Calendar!

Regular Groups		
Every Tuesday	Oils – 10am – 4pm (and others)	Co-Ordinator: Kata Kupresak
Sat 5 th November	Life Drawing 1 – 4pm	Co-ordinator: Olga Juskiw
Sat 12 th November	Mixed Media 10am – 4pm	Co-ordinator: Kathy Bruce
Sat 19 th November	Portraits – 1 – 4pm	Co-ordinator: Elsie Reitenbach
Meetings		
Wed 7 th December	Committee Meeting 8.30am	Secretary: position vacant
Workshops		
None		
Other		
 Christmas Party	Fri 9th December 5.30pm – 7.30pm at the Wodonga Plant Farm (nibbles and drinks)	Co-ordinator: Heather Sparks

For information on how to contact co-ordinators or Secretary, refer to the list at the end of this newsletter.

A Word from our President

Following our AGM on 16 October, changing over to the new Committee has been reasonably straightforward this year, with only a few changes to note – in particular, I would like to welcome new Committee Member Marilyn Forrest.

President – Barb Strand
Vice President – Heather Sparks
Secretary – no nominations received
Treasurer – Linda McMaster

Committee Member – Judy Balfour
Committee member – Rid Farr
Committee Member – Marilyn Forrest

Unfortunately, we are still looking for a Secretary, so if you have computer, internet, and Word skills, then perhaps you might give your consideration to taking on the Secretary position.

I would like to thank all those persons in outgoing positions, who have asked to stand aside this year - Heather Green as Roster Coordinator and studio overseer, Nancy Robinson as Acrylics Coordinator, Rob Rhodes as Committee Member and Maintenance Person, Therese Davis as Secretary. Each of

these people has filled important roles over the past year, or in some cases years, and I would like to sincerely thank them for their time and commitment to AWAS.

There are also some changes to our Studio Session and Workshop groups, and of particular note, Acrylics has merged with Pastels, to create Mixed Media.

PORTRAITS – Elsie Reitenbach
WATER COLOURS – Jen Wallace
MIXED MEDIA – Kathy Bruce
LIFE DRAWING – Olga Juskiw.
OILS – Kata Kuprasek.

As a group, the coordinators will be getting together in the near future to plan our 2016 workshop schedule. Certainly, our plan is to fit in a number of workshops again this year, and I urge you to support these as they are a mainstay of our financial position. We are hoping to attract some great tutors again this year – watch this space....

Thank you to Heather Sparks who will ably lead our hanging team at the Plant Farm next year. I am aware that she has already been busy working out our exhibition themes for the next year. There is currently some discussion as to whether formal exhibitions will continue in the studio, and this will be discussed at our first Committee Meeting to be held in December.

Other positions were filled as follows:

Newsletter – Judy Balfour
Website – Barb Strand
Studio – Marilyn Forrest
Library – Judy Balfour
Membership List/Keys – Janelle Hoban.

At our AGM there was some discussion around the frequency of our general meetings. Currently we are running our General Meetings every second month, with the Committee meeting in the interim. It was agreed to continue with the current setup, but to move the General Meetings to the second Sunday of the month, to avoid conflict with other activities.

There will be no general meeting in December, instead we will all be gathering for **our Christmas Party** on Friday 9 December 2016 5.30pm to 7.30pm at the Wodonga Plant Farm. I hope you can join us....

Our annual exhibition starts in November, and I urge **all** our members to participate in this great opportunity to showcase our society and have your work hung. An exhibition opening is planned for the morning of 19 November, to coincide with the next Gateway Village Open Day and Farmers Market, and further information will be provided on this by our Publicity Officer, Rod Farr. The plan is to encourage the passing public to view our exhibition, whilst making their way around the Village.

Over the next month, Heather Sparks will be looking after the day to day administration, as I head off to Patagonia for a month's holiday there. So, I will catch up with you all again at the Christmas Party.

In the meantime, enjoy your painting.

Barb Strand
AWAS President

President's Report presented at the AGM

It's been quite an active year for Albury Wodonga Artists Society, with four workshops, as well as Plant Farm exhibitions, Paintbox Studio exhibitions, and our first ever exhibition at MAMA. It has actually been quite a challenge for our members to keep up the artwork in line with all this, and is perhaps something we need to look at for next year.

One of the most significant administrative changes that was made by our committee this year was to move the AWAS meetings to bi-monthly. This was seen as a way of reducing the meetings required by our committee, some of whom had full time jobs as well. To ensure that communications to our members did not suffer as a result of the change, the newsletter was ramped up in content and emails and our website have been used more extensively to disseminate information.

We had a few new starters on the committee this year, and we had to have a quick learning curve to get up to speed. The first activity for the new committee to organise was the 2015 Christmas Party, and this was very successfully held at the Wodonga Plant Farm in December last year. General consensus from that occasion was that it was a great venue for our party, and a good way to support the Plant Farm, with whom we have a fantastic working relationship.

Thanks to Committee Member Rod Farr who volunteered to take on the role of Publicity Officer for AWAS. He soon became involved in the meetings of the Gateway Village precinct, and this culminated in our participation in the precinct's first Open Day on 24 September 2016. I understand that more of these occasions are being planned, and it is certainly a great way to showcase the society.

Membership

I am pleased to advise that our membership currently stands at 93, largely because we received quite an influx of new members as a result of the MAMA exhibition earlier this year, and our popular value-for-money Workshops. Thanks to Janelle Hoban for keeping the membership records up to date and accurate.

Thanks also to Jill Scanlon who worked with the committee on our New Members Handbook, and this is now being made available to all new members as part of the joining process. The committee has also agreed to take a more hands on role in meeting and greeting potential new members, ensuring that they are made to feel welcome and are familiar with AWAS procedures.

The committee has reviewed membership fees for 2016/2017, and recommend that membership fees remain as currently set at \$100 per year.

It was with great sadness that we lost two of our esteemed members - Jenny Toole earlier this year, and on 12 October David McDonald. For those of you who may not be aware, David was a long time AWAS member and former doctor. David was best known for his pastel painting – landscapes and portraits, and was a keen plein air artist. Jenny was a well-respected watercolourist, and some of Jenny's prize winning paintings can be seen on our website.

Exhibitions

The MAMA exhibition “Brush with Border Artists” in May/June 2016 was a major exhibition for AWAS this year, with works from 31 AWAS artists, including 31 small “icon” paintings. The opening night on 12 May was well supported, and it is pleasing to note that there were a couple of sales from the exhibition as well. Thanks were sent to MAMA for their support and hard work that contributed to the success of that event.

The Plant Farm exhibitions have been well supported by our artists, and there have also been quite a few sales there. The Paintbox Studio exhibitions unfortunately have not been as well supported by artists this year, and at times it has been quite difficult to get enough paintings on the wall to get a suitable exhibition. Thankfully, there are always artists who have works under the bed or in the spare bedroom who can bring them in at short notice.

It is pleasing to see some AWAS members have had private exhibitions this year, with considerable success, as well as several our members who were successful in various art shows and exhibitions. Congratulations to these members.

Workshops and Monthly Sessions

We have had several workshops this year, thanks to the efforts of our Workshop Coordinators. In January, the Untutored Life Drawing four day workshop was well supported as always. This was Coordinator Clive Vogel’s last workshop before handing over to the new Coordinators Olga Juskiw and Gai Sutherland, who have ably continued the monthly Life Drawing Sessions.

Acrylics workshop with Queensland artist Kelli McGregor. In July we had the Pastels workshop with Melbourne artist Catherine Hamilton, and in October we had the Watercolour workshop with Julie Goldspink. Unfortunately, the oils workshop planned for September with artist Christine Cafarella-Pearce was cancelled, due to lack of numbers but we’re hopeful of more success next year.

Monthly, we have continued to run sessions on Saturdays for Life Drawing, Acrylics, and Portraits. Numbers for these sessions seem to vary quite a lot from one month to the next, with quite low numbers over Winter. There has been some discussion as to whether we have the numbers to continue the Portraits and Acrylics sessions, and this will no doubt be further discussed during this coming year.

Workshops are a significant part of AWAS activities, and also a good contributor to our bottom line. Our aim is to offer members value for money, and quality teachers, and our current rates of \$150 for a two day workshop are extremely attractive to members. The new committee will be looking at these rates again in 2017, to ensure that we are offering workshops at a sustainable rate for AWAS, whilst attracting the best teachers.

I would like to sincerely thank all our Workshop Coordinators for their work this year – I realise that organising workshops, and studio sessions each month, can be quite time consuming and I would like to thank you all for your commitment and involvement.

Communications

As previously mentioned, our communication to members is an important part of how AWAS functions properly. I am sure you will agree that our Newsletter Editor Judy Balfour has done a

terrific job with the Newsletter this year, and the new “Spotlight on...” section has been well received by all, giving a great insight into our members. We have also turned more to email as a means of communicating more information to our members in a timely way, supplemented by the AWAS website. Thanks to Kathy Bruce for ably assisting Secretary Therese with this duty. I feel that there are still a few things we can do to improve communications to our members, and the new committee will be looking at this in the next year.

Our relationship with MAMA (and with other arts groups) has become an important part of how AWAS fits into the local Arts community. During the past year, we have met regularly with MAMA Director Jacqui Hemsley and Curator Bianca Acimovic, and planning had proceeded quite well on our next exhibition “Whitelight” to be held at MAMA in 2017. Unfortunately, with the departure of these two key MAMA personnel, things have gone into a holding pattern, and until the new Curator and Director get up to speed we are unable to confirm what the arrangements for next year will be.

About the Studio

Maintenance of the Paintbox Studio is quite a task – at times it can get grotty, untidy, and full of junk. All members should see this as their responsibility – to keep our work areas and social areas clean and tidy so that all members feel comfortable using our facilities. At times there have been issues, however, thanks to the efforts of Heather Green and Rob Rhodes we are generally kept in check. With Heather’s absence overseas recently, it was quite apparent how much we rely on her to keep us in order. Heather has also been ably managing the weekend rosters for some years, ensuring that there has always been someone in the studio on the weekend. Rob Rhodes has also been ably managing our studio - fixing lights, tables, easels, and whatever else when needed. Rob recently arranged the acquisition of some new work tables for us, and more recently Midori Treeve has arranged for the acquisition of some “new” tables and chairs for our dining area. Many thanks to Rob, Midori, and to Heather for their time, commitment and work.

Secretary Therese Davis has been busy negotiating a new lease for the Paintbox Studio with the Wodonga Council, seeking to reduce our rent as well as improve the onerous conditions of our lease, requiring us to open over weekends. In this regard, she has been somewhat successful – whilst the rental will remain the same, Council has agreed to reduce our opening hours on weekends. This is still under discussion. In addition, the lease period has been reduced to a 12 month commitment, giving us the opportunity to search for other options.

You are no doubt aware that AWAS has a great library, with books, magazines and videos offering many hours of enjoyable study. During this year, our librarian Judy Balfour has spent some considerable time rearranging the books, and carefully grouping and colour coding them into sections. This has been great for ease of use, and for searching for certain books. We have also had many great books donated by members through the year, and we thank them for these generous donations.

Retirement of positions

For various reasons, a few people on the Committee and involved in working roles within AWAS have indicated to me that they wish to stand aside for the coming year. They are:

- Therese Davis as Secretary
- Rob Rhodes as Committee member and Maintenance person

- Heather Green as Roster Coordinator and studio overseer
- Christina Zey as Studio Hanging team coordinator
- Nancy Robinson as Acrylics Coordinator.

I would like to say thank you to these people, who have given their time and effort during this past year. I would particularly like to thank Heather Green for all her work over several years, and her ongoing commitment to AWAS.

Financials

The Treasurer's Report indicates that we have made a small profit for the year, largely due to the success of our four workshops and increased membership. We did not apply for a grant this year, and as such we have been reliant on these areas of income to cover any additional costs.

In terms of sales, we have sold some 20 paintings this year (\$3,325), not including card sales etc., with a profit to the society of about \$500 for the year. Most of the sales were at the Plant Farm. We currently charge commission of 15% on all sales at the Plant Farm and the Paintbox, and this is a very attractive rate for AWAS artists. I note that common industry rates are up around the 30 to 40% mark, or even more.

Recently we retired our click/clack credit machines, and any sales here at the Paintbox Studio must now be cash. The savings are quite considerable.

Annual Exhibition

Just a reminder that our Annual Exhibition is coming up in November, to be held here at the Paintbox Studio. I encourage all our members to submit a painting for this exhibition, as it is a wonderful opportunity to get your painting hung, and to showcase the society to visitors.

Next Year

As I have already indicated, 2016/17 promises to be another interesting year for us, with our proposed MAMA Exhibition high on the agenda.

Member involvement in AWAS monthly activities has been waning, and this is something we wish to tackle in 2016/17. Every organisation has to look inside itself from time to time, and examine its strategies and objectives, in light of the changing environment about it. To this end there will probably be considerable discussion around these areas, and new ideas are always welcome. There have been several suggestions for new activities to encourage people to come along – things such as Plein Air sessions, new workshops, trips away, possible volunteer charity involvement, more open days, and so on. Please feel free to volunteer any thoughts on this matter to your committee.

Finally, I would like to thank all of the AWAS stalwarts who have supported us during the year. Volunteer organisations such as AWAS rely heavily on its members to not only survive but to grow and excel. Often a lot of the load falls on just a few shoulders. AWAS's key values of social activity around painting, sharing our knowledge of the arts with others, and supporting our fellow artists are key to our organisation, and it is these that we need to foster and grow.

Barb Strand

President

Members' News

An important reminder to all members that annual membership fees are now due – please pay promptly so we can finalise the membership list. Payments can be made directly to our bank account, or by cheque posted to The Treasurer, Albury Wodonga Artists Society, P.O. Box 1171 Wodonga. 3689.

Bank details: BSB: 063 534 Account No: 00903179

If you have change of details - phone number/s; e-mail or home address – please notify Linda McMaster: allanlin@bigpond.net.au or 02 6041 1845; or in writing to our P.O. Box.

Vale – David McDonald

Sadly, one of our near original members, David McDonald died on the 12th October.

A Scotsman through and through, whilst I was a "Limey" yet we were great friends, not so our dogs, his a very Scottish Terrier and mine, an English Staffy, - they pointedly ignored each other for years!

He worked as a GP and for over 10 years as Geriatrician at the Ovens and Murray Hospital in Beechworth.

As a couple of novices, he persuaded me to join him in a week's painting on Kosciuszko with a group from Melbourne and the Horsham area and we were hooked, shortly afterwards in some trepidation we joined a newly formed group of local painters calling themselves the "Albury Wodonga Artists Society" were made very welcome, David was for many years its Secretary and public officer for Victoria and in appreciation for his work he was made a Life Member.



His other interests were photography, fly fishing, and he was a knowledgeable bird watcher. He travelled extensively on his motorbike and Campervan.

Married to Betty, he had two children two grandchildren, and two great grandchildren. A more than competent pastelist, his work continues to give pleasure to a lot of people.

He will be sadly missed – in particular his call to lunch "It's tucker time!"

Tribute written by David's friend, John Mason.

PAULINE (PAULS) FARRIES (See Spotlight On... in this issue) is moving to Gippsland. Your company and sense of humour will be sorely missed at the Studio and we wish you well for the future both in Gippsland and on your painting trips overseas. Continue to enjoy life to the full.

Christmas Party



Friday, 9th Dec at the Plant Farm \$20 per head Partners welcome. 5.30 – 7.30.

Come along to a great social event, chat with friends and celebrate the year with a glass of champagne and nibbles. Tea and coffee will be available @\$3.00. Please pay \$20 (cash) at the door.

If you wish to come (and haven't put your name on the list on the noticeboard at the studio) please contact Heather Sparks ASAP as we need to know numbers for catering. The Plant Farm has been booked for our exclusive use at this time. Heather's contact details are:

Phone: 02 6059 5306 or email heathersparks@exemail.com.au

Spotlight On..... Pauline Farries (known as Pauls)

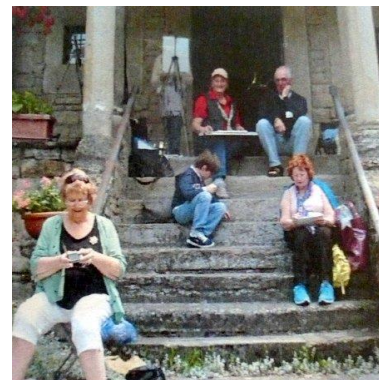


I remember as a kid of eleven having an easel set up in the attic of the old hotel in the Cotswolds, England where we lived before coming to Australia in 1959. One year in Adelaide and then down to Penola in the south-east of South Australia. Through high school there I had encouragement from a terrific art teacher, Bev Street – thank you Miss Street!

Life happened and some twenty moves later I did a two-year certificate course at Foster / Tuncurry TAFE, N.S.W. in

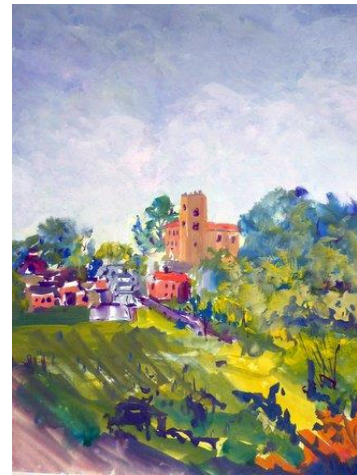
painting, drawing, ceramics and screen printing. Then in South Gippsland I was part of a thriving arts community; exhibiting at Meeniyah Gallery and the Stockyard Gallery, Foster (Victoria this time).

In 2010 I had the wonderful experience of going to Italy to paint with my friend Janette Garbuio who runs Paesano Tours and I have since been back a couple of times. The paintings shown here are examples from the trip I did in May this year.



Here's Pauline on the left





I delight in painting outdoors in watercolour, gouache, oil and pen and wash, but I also have fun experimenting in the studio with flow techniques and mixed media.

Next year I am looking forward to going, with four friends, to paint in England and Scotland for a month (that's June) and before that I have a week at Mt Buller with about twenty other artists.

In the meantime, it's hello to members of AWAS who don't know me and farewell to those that do. After being in Albury Wodonga for six years I am returning to Gippsland and cooler climes – always the gypsy and creating.

Cheers – Pauls

Free!!!!

We wish to be relieved of the table and pink plastic chairs we had in the meeting room. These are in the middle room of the studio and if not collected by Wednesday, 16th November they will be taken to the Tip. We will keep the green plastic chairs to be used by artists in the studio. **DO NOT USE THE CHAIRS IN THE MEETING ROOM WHEN PAINTING!!!!**

Studio News

Members' Annual Exhibition will be held from 15th Nov – 31st January. Paintings must be at the studio by Saturday 12th November. Please ensure the proper hanging equipment has been used. Also, don't forget your \$2.00 entry fee, put in an envelope labelled with your name and attached to the back of your painting. Once an exhibition has been hung all paintings must remain until the exhibition closes – do not take down or hang other paintings without notifying Christina.

Lately we have had a poor response to painting exhibitions at the studio with few entries. At the next committee meeting (7th Dec) ideas for how this may be addressed in 2017 will be discussed. If you have any ideas for this, please e-mail Judy at jybalfour@outlook.com

Plant Farm News

Throughout 2016 we have had very successful exhibitions at the Wodonga Plant Farm with quite a few sales. Our next exhibitions will be "Little Gems" from Tuesday 6th December – 31st January. "Little Gems" means little price (\$150 or less) but any size paintings. Bring painting to the Plant Farm at 2.00pm on Tuesday, 6th and collect "Blooming Lovely" paintings then. Please do not leave - paintings for the Plant Farm at the studio, bring them to the Plant Farm or ask someone to bring it for you. Please ensure the proper hanging equipment has been used. Also, don't forget your \$2.00 entry fee, put in an envelope labelled with your name and attached to the back of your painting.

Local Exhibitions

GIGS" Nature's Pallet" Botanical artists Gay Glover, Sandi Gadd and Vie Hawkins - 2nd – 27th Nov
Opening – Friday, 4th Nov 5.30 – 7.00

GIGS Members' Exhibition "Collectively 2016" 13th Dec- 8th Jan

Bright Art Gallery Summer Exhibition (previously called a Christmas Exhibition) 26th November – 30th January. Gallery open Thursday to Monday 10am – 4pm. Closed 20th Dec – 4th Jan.

Corowa Art & Photographic Exhibition – 30th Dec – 22nd Jan at Corowa Memorial Hall.

Gallery 294 Corowa will hold a market of art and craft on Sat 26th Nov, 8am – 2pm.

Gateway Open Day

On Saturday, 19th November another Gateway Open Day (also Farmers' Market day) will be held. This will be in the morning and it is our Portraits session in the afternoon. It would be great to have some members painting in the morning (between 10 – 1) to encourage members of the public into the Studio to view our Annual Exhibition (and maybe purchase!!!) Maybe a couple of people could be painting on the verandah. Please consider coming along.

Art Quote

"If people knew how hard I worked to get my mastery, it wouldn't seem so wonderful at all."
Michelangelo

Key Contacts

President	Barb Strand	Phone: 0412 688 507 Email: martinstrand@westnet.com.au
Vice President	Heather Sparks	Phone: 02 6059 5306 Email: heathersparks@exemail.com.au
Secretary		Position vacant
Treasurer	Linda McMaster	Phone: 02 6041 1845 Email: allanlin@bigpond.net.au
Newsletter Editor	Judy Balfour	Phone: 02 6043 3169 0439 953 903 Email: jybalfour@outlook.com
Website Editor	Barb Strand	Phone: 0412 688 507 Email: martinstrand@westnet.com.au
Life Drawing	Olga Juskiw	Phone: 02 6021 8693 Email: olga.juskiw@icloud.com
Mixed Media	Kathy Bruce	Phone: 02 6025 5913 Email: kathleenbruce@bigpond.com
Portraits	Elsie Reitenbach	Phone: 02 6059 6298 Email: rreitenb@southernphone.com.au
Water Colour	Jen Wallace	Phone: 02 6026 4800 Email: jens@bigpond.net.au
Oils	Kata Kupresak	Phone: 0412 766 313 Email: kkupresak@hotmail.com
Studio Exhibitions	Christina Zey	Phone: 02 6040 0045 or 0410 511 211 Email: cristina2zei@gmail.com
Plant Farm Exhibitions	Heather Sparks	Phone: 02 6059 5306 Email: heathersparks@exemail.com.au