



ALBURY - WODONGA  
ARTISTS SOCIETY

# NEWSLETTER

PAINTBOX STUDIO/GALLERY  
GATEWAY ISLAND, LINCOLN CAUSEWAY,  
PO BOX 1170,  
WODONGA, VICTORIA 3689

[www.awartsoc.org](http://www.awartsoc.org)  
[awas@awartsoc.org](mailto:awas@awartsoc.org)

DECEMBER 2015

## Dates for your Calendar!

Regular Groups		
Every Tuesday	Oils – 10am – 4pm ( and others)	Co-Ordinator: Kata Kupresak
Sat 5 <sup>th</sup> December	Life Drawing 1 – 4pm	Co-ordinator: Clive Vogel
Sat 12 <sup>th</sup> December	Acrylic Group 10am – 4pm	Co-ordinator: Nancy Robinson
Sat 19 <sup>th</sup> December	Portraits – 1 – 4pm	Co-ordinator: Elsie Reitenbach
Not held in December	Pastels – 10am to 4pm	Co-ordinator: Kathy Bruce
Meetings		
Wed 20 <sup>th</sup> January	Committee Meeting 8.30am	Secretary: Therese Davis
Sun 21 February	General Meeting 2.00pm	Secretary: Therese Davis
Workshops		
Life drawing	2 <sup>nd</sup> – 5 <sup>th</sup> January	Co-ordinator: Clive Vogel
Sumi-e	27 <sup>th</sup> – 28 <sup>th</sup> February	Co-ordinator: Midori Treeve
Acrylic	12 <sup>th</sup> – 13 <sup>th</sup> March	Co-ordinator: Nancy Robinson
Other		
 Christmas Party	Wed 2 December 5.30pm – 7.30pm at the Wodonga Plant Farm (nibbles and drinks) \$20 (preferably cash) and pay at the door	Co-ordinator: Heather Sparks Please reply to Heather ASAP if you are coming – 6059 5306 or <a href="mailto:heathersparks@exemail.com.au">heathersparks@exemail.com.au</a>

For information on how to contact co-ordinators or Secretary, refer to the list at the end of this newsletter.

## A Word from our President

It's great to see that November started off with a bang, with the commencement of our Annual Members Exhibition. Thank you to the hanging team, and to all those who made the opening on Sunday 8 November a success. Unfortunately I was unable to attend, but Vice President Heather tells me that it was a great afternoon, with quite a turn-up of members and visitors, and a well catered (as usual) afternoon tea.

Our new committee and our workshop co-ordinators and exhibition planning teams have been busy with plans for 2016, and it is definitely looking like it will be an exciting and busy year for us, as artists. Several workshops are already planned, and of course we will have our MAMA exhibition and regular exhibitions at the Wodonga Plant Farm and in our studio. These should keep us happily

at our easels for quite a while! Thank you to Midori Treeve, who has arranged a Sumi-e workshop for us in February, with Melbourne artist Emi Kamataki (information later in this newsletter). Also planned are workshops for Acrylics (March) and Watercolour in September or October. There will be more on these as the information becomes available. Other workshops are also being planned as I write this, including oils and pastels.

Planning these workshops and exhibitions is only part of the story. The other part is that we need members to support our workshops to ensure that they are a success and can run profitably for our society. We make every effort to arrange workshops that have quality tutors at reasonable rates for our members. In addition, we are trying to ensure that members have advance warning of these workshops, so that they can put them in their diary now. Similarly, the 2016 Exhibition Schedule (later in this newsletter) should get us all starting to think about our works for next year.

Just a reminder that coming up on Wednesday 2 December 2015 is our Christmas Party at the Wodonga Plant Farm, starting at 5.30pm. This will be a great opportunity to meet socially, and I look forward to seeing you all there.

Barb Strand

### Other News from the Committee

Committee Member Rob Rhodes has kindly offered to coordinate Maintenance of our studio and equipment, and as such any requests for work or things to be fixed should be directed to him. Contact him by email [robandrobyn@gmail.com](mailto:robandrobyn@gmail.com) or phone 0438 579 616. .

You may recall that at our AGM there was no volunteer for the position of Publicity Officer. Thanks to Committee Member Rod Farr who has since offered to fill this position.

## Members News

A warm welcome to the following new members – Veenu Veenu, Sandi Gadd.

### Christmas Party



Wed. Dec 2<sup>nd</sup> at the Plant Farm \$20 per head Partners welcome. 5.30 – 7.30.

Come along and celebrate the year with a glass of champagne and nibbles. Tea and coffee will be available @\$3.00. Please pay \$20 (preferably cash rather than a cheque) at the door.

If you wish to come (and haven't put your name on the list on the noticeboard at the studio) please contact Heather Sparks ASAP as we need to know numbers for catering. The Plant Farm has been booked for our exclusive use at this time. Heather's contact details are:

Phone: 02 6059 5306 or email [heathersparks@exemail.com.au](mailto:heathersparks@exemail.com.au)

## Spotlight On.....

### ***Glenys Baxter***



Glenys is a relatively new member of our society and is not only enjoying her painting, but also the sales she has been achieving. Many members may know Glenys as the past owner of Lasting Images picture framers in Kiewa St, Albury. She recently became a committee member of GIGS.

“Years of traditional landscape painting in several mediums have given way to the exciting versatility of acrylics and mixed media. I love experimenting with different textures and effects and the use of bold, bright colour. As in nature, it’s all about the balance and most of my inspiration comes from the beauty and diversity of the Australian landscape, seasonal changes and my passion for the environment in which we live.

Over the years I have participated in many tutorials and workshops by leading Australian artists and have attended Summer and Winter Art Schools at Mitchell College, Bathurst NSW, studying both oils and watercolour. More recently I did tutorials with contemporary Artist Anne Collins, formerly of Wodonga and this month I attended a 2 day intensive workshop with Carole Foster from “Colour in your Life” fame, at her home in Dromana. I recently partnered a successful exhibition with Carol Gilbert at Spiritus Gallery, Yackandandah. I was accepted and sold at Camberwell 2015 Exhibition & Trinity College Albury and my works are exhibited and have sold at Arte Alchemy Gallery, Beechworth.”



Glenys

## Membership

Membership for the 2015 / 2016 was due at the AGM. If you haven’t paid yet you may pay (\$100) by:

### **By Electronic transfer**

BSB 063 534

Acct No 0090 3179

Write your name (remitter) as a reference, and Subs as the description. This way the treasurer will know who paid the amount and what for.

## By Cheque

Post to:       The Treasurer  
                  Albury Wodonga Artists Society  
                  P.O. Box 1170  
                  Wodonga VIC. 3689.

## Don't forget to fill in the Membership Renewal Form

To make sure we have your correct contact details - postal address, phone number and email address please fill in the Membership Renewal Form with the exhibition entry details on it (available on the bench in the meeting room at the studio; also included in this newsletter). This will ensure we can keep you up-to-date with AWAS exhibition themes, deadlines, ideas and events.

Membership cards and receipts are in individual envelopes and are to be picked up from the table in the studio meal room. These can be used for discounts at Riot Art, I Was Framed, (Albury), Lasting Images (Albury) and at Robyn White's art supplies (Wodonga). There are other framing businesses too that will give you a discount when you show your card!

## Studio News

The studio will be closed to the public from 24<sup>th</sup> December and will re-open on Tuesday 5<sup>th</sup> January. Of course any member may use the studio during this time.

Our members' exhibition is currently hanging in the studio and will remain until Sunday 7<sup>th</sup> February.

## Plant Farm News

We sincerely thank the Wodonga Plant Farm for their support and allowing society members to exhibit works in the Gallery Cafe. Also a special thanks to all the members who have supported this program in 2015.

**Little Gems** - Our next exhibition at the Plant Farm will be commencing December 1<sup>st</sup> through to Feb 2<sup>nd</sup>. The paintings can be any size but not be priced at more than \$150.

## About Our MAMA Exhibition

Since our AGM, Vice President Heather and I have met with Curator Bianca Acimovic of MAMA to discuss planning for our MAMA exhibition. We note the following points:

1. Contrary to previous advice, the date for our exhibition has NOT been finalised as yet, and at this stage a number of alternate dates are being considered by MAMA staff.

2. The theme for our exhibition is as previously published, but the title is still to be agreed with MAMA. (Any suggestions?)
3. Bianca advised that MAMA will require approximately 4 weeks to prepare the exhibition, once the works for inclusion have been selected by the MAMA team. This will allow time for framing, hanging, and administration.
4. There will be a 30% commission on all works sold through MAMA. This should be taken into consideration by the artist when setting the sale price for the work, to be **inclusive** of commission.
5. All of the LARGE works (not the icons) that are using MAMA frames should be supplied including matts. The icons will be unmatted.

So the bottom line is that even though we don't as yet know the final date for this exhibition, all members are urged to continue working on their paintings and take the opportunity of the delay to ensure that AWAS is represented by your BEST work. For those of you who are still considering whether to put in a work, I can only encourage you to do so, as this is a great opportunity for each artist to showcase their work, and for our society to present the diversity of our artist base. This should be a fabulous exhibition when it is all pulled together, and I am looking forward to first seeing our AWAS paintings on the walls of MAMA.

Keep painting,

Barb

### MELBOURNE CUP DAY

A small group of dedicated Melbourne Cup devotees met at the Paintbox Studio for a wonderful luncheon and afternoon tea (thanks to catering by Marilyn Forrest), complete with the requisite hats and television. John Mason took out the sweep, and took home \$50. Little painting was done, but a great time was had by all.



## EXHIBITION SCHEDULE 2016

DATE	GARDEN GALLERY CAFE	DATE	PAINT BOX STUDIO
Until 31 Jan	LITTLE GEMS (cont. from 2015)	Until 7 FEB (cont. from 2015)	MEMBERS' SUMMER EXHIBITION
2 FEB to 5 APRIL	COLOUR ME HAPPY	9 FEB to 4 MARCH	NEW MEMBERS EXHIBITION
5 APRIL to 7 JUNE	FACES & FIGURES	5 MARCH to 3 APRIL	FREE SPACE
7 JUNE to 2 AUG	TOWN & COUNTRY	5 APRIL to 2 MAY	DYNAMIC ACRYLICS
2 AUG to 4 OCT	REFLECTIONS	3 MAY – 5 JUNE	FREE SPACE
4 OCT to 6 DEC	BLOOMING LOVELY	7 JUNE to 4 JULY	WATER COLOUR MAGIC
6 DEC to 31 JAN (2017)	LITTLE GEMS (any size but nothing over \$150)	3 JULY to 7 AUG	FREE SPACE
<b>EXHIBITION COORDINATORS</b>  <b><u>Garden Gallery Cafe</u></b> <b>Heather Sparks &amp; Nancy Robinson</b> <i>(Noni Maclelland &amp; Heather Green)</i>  <b><u>Paint Box Studio</u></b> <b>Christina Zey &amp; Kathy Bruce</b> <i>(Tanya Healy)</i>		9 AUG to 5 SEP	INCREDIBLE OILS
		6 SEP to 2 OCT	FREE SPACE
		4 OCT to 13 NOV	PASTEL PERFECT
		15 NOV to 31 JAN (2017)	MEMBERS' ANNUAL SUMMER EXHIBITION

**NOTE:**

**FREE SPACE** is available for solo or joint exhibitions.  
Please contact Christina or Kathy.

## Workshops.....

There are a number of workshops planned for 2016. We will have an exciting year!

2<sup>nd</sup> – 5<sup>th</sup> January (4 days) – Life Drawing (untutored)

27<sup>th</sup> – 28<sup>th</sup> February – Sumi-e (Japanese brush painting).

12<sup>th</sup> – 13<sup>th</sup> March – Acrylics

30<sup>th</sup> – 31<sup>st</sup> July – Pastels. More news on this later, but if interested contact to Kathy Bruce

Phone: 6025 5913; e-mail: [kathleenbruce@bigpond.com](mailto:kathleenbruce@bigpond.com)

### Life Drawing

The summer will be so hot and the Christmas New Year period can be such a hassle. So why not escape the heat and bustle and indulge in 4 days of cool art at our annual life drawing work shop (untutored) in early January? See all the details below

### Four Day Life Drawing Workshop (untutored)

Held on: 2<sup>nd</sup>, 3<sup>rd</sup>, 4<sup>th</sup> and 5<sup>th</sup> of January 2016

Time: 10:00 am to 4:00 pm each day

Fees per day:

- Members \$30.00
- Non Members \$40.00
- Students (full time 25 years or under) \$20.00

Payment:

- Required on first day of attendance for number of days attending (please note: no half day fees).

As space is limited (attendance limit of 12 artists per day), bookings are essential and must be received **prior to Thursday December 31<sup>st</sup> 2015**. Models will be provided for the four days. Tables, chairs and 15 easels are available, however, bring your own materials.

BYO lunch. Tea and coffee provided.

For bookings please call Clive Vogel 0427 774 214

You can also book via Email at: [clive.vogel@tafensw.edu.au](mailto:clive.vogel@tafensw.edu.au) (until 11<sup>th</sup> of December 2015).

Clive



## Sumi-e Workshop

**When:** 27 & 28 February 2016

**How much:** \$150 for two days (members and students); \$180 (non-members)

**What you need:** Japanese brush, Calligraphy ink (sumie), Japanese paper. (More details will be given to participants later)

Our long awaited Sumi-e work shop is finally here!

Sumi-e is originally from China and it is spiritually rooted in ZEN Buddhism. In Japan its art of concentration, clarity and simplicity was paralleled in the calm and tranquillity of Samurai Code of Conduct. Today, becoming a master Sumi-e artist requires the same investment of effort and time in rigorous training and discipline. (You can Google "History of Sumi-e" for more info.)

Our tutor is a Japanese lady called **Emi Kamataki** who lives in Melbourne. She learnt Calligraphy and painting as a child. In 2005, the International Sumi-e Association ran a Sumi-e work shop in Melbourne and since then she studies this art form in Melbourne and Tokyo.



She is now certified as an advanced lecturer and has been awarded at the exhibition in Tokyo. Apart from exhibiting her art in Japan, China, France and Estonia, she also teaches at school as an artist in residence as well as runs classes for adult groups and also gives private lessons. She loves this simple yet deep art of brush, ink and paper combined and is looking for further possibilities of Sumi-e to develop her own style.

Places are strictly limited to a minimum of eight to a maximum of twelve participants to make this workshop worthwhile. This is rather short notice. However, quite a few people are already showing interest, so be quick to put your name down!! Fees need to be paid in full no later than the 1<sup>st</sup> February. I can purchase and make up a basic kit which will have a Japanese brush, ink, paper and mat for the cost price of around \$15. Please let me know before the 10<sup>th</sup> February, if you wish to purchase a kit.

An application form is attached at the end of this newsletter. Members wishing to attend the workshop please complete the application form and forward to the Treasurer with payment.

Midori Treeve ([mtreeeve1@bigpond.com](mailto:mtreeeve1@bigpond.com))

## Acrylics Report (Co-ordinator Nancy Robinson)

I do hope you all enjoyed our November experience of Pop Art with Christina.

Christina is my Acrylics Support Person for the next 12 months. We are fortunate as she has a life time of knowledge and experience to share with us.



Next year's sessions are planned with a balance of workshops and individual choice. So I hope you will find this exciting and challenging.

March 12/13<sup>th</sup> we have a weekend workshop planned with Kellie Mc Gregor as Tutor. Her work is considered to be Contemporary Realism....lots of colour and very interesting results.

On December 12<sup>th</sup> bring along something you are working on. Most important on the day - food and drink to share for our Christmas Luncheon Celebration. We look forward to this, but if you are unable to come, best wishes for Christmas. We will see you in 2016 refreshed and ready for an art filled, creative year.

Nancy

## Acrylic Workshop (Tutor: Kelli McGregor)

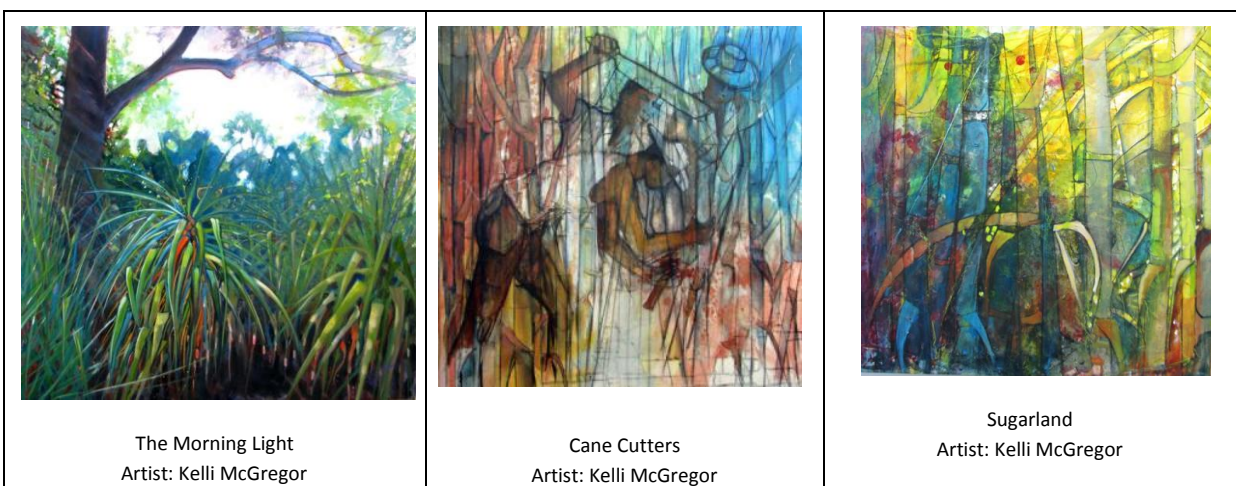
2 day Tutored Workshop 'Acrylic and Beyond'

12<sup>th</sup> – 13<sup>th</sup> March 2016 at the Paintbox Studio

Tutor: Kelli McGregor. For more info, see her website [www.kellimacart.com.au](http://www.kellimacart.com.au)

Fee: \$150 pp

We are excited to have the expertise of Kelli McGregor, a professional artist who produces vibrant and colourful paintings, often using mixed media. Her landscapes convey great warmth and energy and depict the rich colours and unique features of the Australian Landscape.



An enrolment form is at the end of this Newsletter so make sure you don't miss this wonderful opportunity to learn and develop new approaches to painting that Kelli will offer. Ideally, it is preferable to limit the workshop size to 12 participants.

We have also planned some exciting untutored workshops for next year on Acrylic Saturdays (2<sup>nd</sup> Sat of each month) so check out the program featured in this Newsletter. There will be a charge of \$5.00 pp for each planned program to cover general costs. Any funds left over at the end of the year will be donated to AWAS.

Happy painting to you all.

Nancy and Christina

## Acrylic Group – Saturday 12<sup>th</sup> December

Free painting at this session, but as it is the last acrylics day for 2015 please bring a plate and/or drink for our shared lunch.

## PLANNED ACRYLIC SATURDAY SESSIONS 2016

**NOTE:**            4 April – 2 May            Studio/Gallery Curated Exhibition  
**THEME:** Dynamic Acrylics

**The Planned Sessions will attract a \$5.00 fee for materials.**

January 10 <sup>th</sup>	<b><u>Free time</u></b> – working on <u>MAMA exhibition</u> or <u>Colour Me Happy exhibition</u> (Plant Farm 2 Feb)
February 14 <sup>th</sup>	<b><u>Restricted Colour Palette</u></b> (using 4 colours or less plus B & W for mixing)
March 13/14	Tutored Workshop with Kelli McGregor (\$150 PP x 2 days)
April 10 <sup>th</sup>	<b><u>Rhythmic Landscapes</u></b> – calligraphic lines/abstracted forms and a complementary colour scheme.
May 8 <sup>th</sup>	<b><u>Free time</u></b> and preparing for <u>Town &amp; Country exhibition</u> (Plant Farm 7 June)
June 12 <sup>th</sup>	<b><u>Bird's Eye View of Landscape/Farm fields</u></b> – fractured or fragmented picture plane in the style of Cubism.
July 10 <sup>th</sup>	<b><u>Free time</u></b> and preparing for <u>Reflections exhibition</u> (Plant Farm 2 Aug)
August 14 <sup>th</sup>	<b><u>Fauvism</u></b> – wild and strong colours, symbolic colours and shapes, flowers/plants/animals/wild beasts composition.
September 11 <sup>th</sup>	<b><u>Free time</u></b> and preparing for <u>Blooming Lovely exhibition</u> (Plant Farm 4 Oct)
October 9 <sup>th</sup>	<b><u>Modernism and Stratification of the Landscape</u></b> – using acrylics with pen/ink/ball point/pencils.
November 13 <sup>th</sup>	<b><u>Free time</u></b> and preparing for <u>Little Gems exhibition</u> (Plant Farm 6 Dec)
December 11 <sup>th</sup>	<b><u>Tonal Work</u></b> – use of lines both as symbols and representation of nature – integrating plant forms into a linear flow.

## Exhibitions

Exhibitions to enter and/or visit. Posters and information for these are on the Noticeboard and check online. Entry forms are in the basket in the meeting room.

**Corowa Art Show:** 3<sup>rd</sup> – 26<sup>th</sup> January. (Entries have closed) Enquiries 02 6033 3081

Website – [www.corowa.nsw.gov.au](http://www.corowa.nsw.gov.au)

**Bright Art Gallery Christmas Exhibition:** 28<sup>th</sup> Nov – 21<sup>st</sup> Dec (Entries have closed)

Enquiries: 03 5750 1660 [www.brightartgallery.org.au](http://www.brightartgallery.org.au) This exhibition includes Paintings, Prints, Photographs, Drawings, Ceramics, Glassware, Sculptures, Jewellery, Wearable Art, Leadlight, Woodwork, Mosaics, Cards and more.

**Pfeiffers Winery:** 28<sup>th</sup> Dec – 26<sup>th</sup> Jan. Entries close 13<sup>th</sup> Dec. Art works are to be related to wine.

Enquiries: 6033 2805 [www.pfeifferswinesrutherglen.com.au](http://www.pfeifferswinesrutherglen.com.au)

**MAMA** – exciting major exhibitions include –

“Impressions of Paris – Toulouse-Lautrec, Degas, Daumier” 11<sup>th</sup> Dec-31<sup>st</sup> Dec. This exhibition includes five Degas sculptures.

“Marilyn – Celebrating an American Icon” 12<sup>th</sup> Feb – 8<sup>th</sup> May. This “blockbuster” international exhibition will be shown only at MAMA, nowhere else in Australia.

Ph: 6043 5800 [www.mamalbury.com.au](http://www.mamalbury.com.au)

**National Gallery of Australia, Canberra** – Tom Roberts Exhibition. 4<sup>th</sup> Dec-28<sup>th</sup> March.

More information later..... possible bus trip on 24<sup>th</sup> March with Martins Bus Co.

## A note from the editor

As the new Newsletter editor I am asking members to contribute to the publication. If you have any item you think would be of interest to members please forward this to my e-mail – [djbalfour@bigpond.com](mailto:djbalfour@bigpond.com) or place it in the “Items for Newsletter” folder in the wire basket in the meeting room. Remember it is your Newsletter and we wish to make it as interesting as possible for everyone to enjoy and be part of the society.

Thanks – Judy Balfour

## Art Quote

“Art is never finished, only abandoned.” Leonardo da Vinci

*WISHING EVERYONE A VERY MERRY CHRISTMAS  
AND A HAPPY NEW YEAR*



## Key Contacts

President	Barb Strand	Phone: 0412 688 507 Email: <a href="mailto:martinstrand@westnet.com.au">martinstrand@westnet.com.au</a>
Vice President	Heather Sparks	Email: <a href="mailto:heathersparks@exemail.com.au">heathersparks@exemail.com.au</a>
Secretary	Therese Davis	Phone: 0400 052 151 Email: <a href="mailto:therese.davis@delwp.vic.gov.au">therese.davis@delwp.vic.gov.au</a>
Treasurer	Linda McMaster	Phone: 02 6041 1845 Email: <a href="mailto:allanlin@bigpond.net.au">allanlin@bigpond.net.au</a>
Newsletter Editor	Judy Balfour	Phone: 02 6043 3169 0439 953 903 Email: <a href="mailto:djbalfour@bigpond.com">djbalfour@bigpond.com</a>
Website Editor	Barb Strand	Phone: 0412 688 507 Email: <a href="mailto:martinstrand@westnet.com.au">martinstrand@westnet.com.au</a>
Life Drawing	Clive Vogel	Phone: 0427 774 214
Acrylics	Nancy Robinson	Phone: 02 6024 3127
Portraiture	Elsie Reitenbach	Phone: 02 6059 6298
Pastels	Kathy Bruce	Phone: 02 6025 5913
Water Colour	Jenny Wallace	Phone: 02 6026 4800
Oils	Kata Kupresak	Phone: 0412 766 313
Studio Exhibitions	Christina Zey	Phone: 02 6040 0045 or 0410 511 211 Email: <a href="mailto:cristina2zei@gmail.com">cristina2zei@gmail.com</a>
Plant Farm Exhibitions	Heather Sparks	Phone: 02 6059 5306 Email: <a href="mailto:heathersparkes@exemail.com.au">heathersparkes@exemail.com.au</a>

### NEW APPLICATION/RENEWAL ANNUAL MEMBERSHIP FORM

NAME \_\_\_\_\_

ADDRESS \_\_\_\_\_

\_\_\_\_\_ P/C \_\_\_\_\_

PHONE ( ) \_\_\_\_\_ MOBILE \_\_\_\_\_

EMAIL \_\_\_\_\_

**As a member of the Albury Wodonga Artists' Society Inc (AWAS) I agree to be bound by the rules of the Society, listed hereunder:**

- Artists will only submit their own original work.
- Compositions based on published material or other artists' works are NOT considered original.

### ARTIST'S DECLARATION

I certify that my works entered for exhibiting with the Albury Wodonga Artists' Society are my original works and do not breach another artist's copyright or intellectual property.

Signature \_\_\_\_\_ Date: \_\_\_\_\_ Paid: Yes / No

**Disclaimer:** Albury Wodonga Artists' Society Inc. (AWAS), accepts in good faith the information provided by the member whose signature is on the form. AWAS cannot be held liable should it prove incorrect or inaccurate.

**Sumi-e Workshop Enrolment Form*****Artist: Emi Kamataki******Date: Saturday 27<sup>th</sup> and Sunday 28<sup>th</sup> February 2016***

Cost: \$150 - members & students \$180 - non members. Full payment to be received by 1<sup>st</sup> February 2016. Payment details are given below.

**YOUR DETAILS:**

Name: \_\_\_\_\_ Phone: \_\_\_\_\_

Email: \_\_\_\_\_

Address: \_\_\_\_\_ PC \_\_\_\_\_

Payment Encl: ☐ Full payment \$ \_\_\_\_\_Payment Method ☐ Cash ☐ Cheque ☐ Direct Deposit Bank/Internet

Signed \_\_\_\_\_ Date: \_\_\_\_\_

***\*\* Please advise Workshop Co-ordinator ASAP when you have made payment.***

Co-ordinator Name: Midori Treeve

Email: [mtreeve1@bigpond.com](mailto:mtreeve1@bigpond.com) or phone 02 6059 2765***Mailing & Bank Account details for AWAS Payments***

Postal Address: The Treasurer, P.O. Box 1170, Wodonga Vic. 3689

**Electronic banking:**

Account name: Albury Wodonga Artists Society

BSB: 063 534

Account Number: 0090 3179

Please remember to put YOUR NAME (Remitter) in as a reference on your payment and for the description "Sumi-e" so that the Treasurer knows who has paid and what for.

**Acrylics Workshop Enrolment Form*****Artist: Kelli McGregor******Date: Saturday 13<sup>th</sup> and Sunday 14<sup>th</sup> March 2016***

Cost: \$150 - members & students. \$180 – non-members. Deposit: \$50 by 1<sup>st</sup> Feb.  
Remainder by 19<sup>th</sup> February 2016. Payment details are given below.

**YOUR DETAILS:**

Name: \_\_\_\_\_ Phone: \_\_\_\_\_

Email: \_\_\_\_\_

Address: \_\_\_\_\_ PC \_\_\_\_\_

Payment Encl: ☐ Full payment \$ \_\_\_\_\_Payment Method ☐ Cash ☐ Cheque ☐ Direct Deposit Bank/Internet

Signed \_\_\_\_\_ Date: \_\_\_\_\_

***\*\* Please advise Workshop Coordinator ASAP when you have made payment.***

Coordinator Name: Nancy Robinson

Email: or phone 02 6024 3127 [nancyrobinson1893@gmail.com](mailto:nancyrobinson1893@gmail.com)***Mailing & Bank Account details for AWAS Payments***

Postal Address: The Treasurer, P.O. Box 1170, Wodonga Vic. 3689

**Electronic banking:**

Account name: Albury Wodonga Artist Society

BSB: 063 534

Account Number: 0090 3179

Please remember to put your NAME (Remitter) in as a reference on your payment and for the description – “Acrylics” so that the Treasurer knows who has paid and what for.