



ALBURY - WODONGA  
ARTISTS SOCIETY

APRIL

NEWSLETTER No.

Proudly supported by:



PAINTBOX STUDIO/GALLERY  
GATEWAY ISLAND, LINCOLN CAUSEWAY,  
P.O. BOX 1170,  
WODONGA, VICTORIA 3689  
www.awartsoc.org  
awas@awartsoc.org

April 2015

2010

## Dates for your Calendar!

- Sat – 4<sup>th</sup> April Life Drawing  
**Wed – 8<sup>th</sup> April Committee Meeting**  
Sat – 11<sup>th</sup> April Acrylic group 10am-4pm  
**Wed - 15<sup>th</sup> April General Meeting 12.30pm**  
Sat – 18<sup>th</sup> April Portraits 1-4pm  
Sat - **Still Life discontinued**  
Every Tuesday - 10am-4pm 'Oil Painters' (and others)

Coordinator: Clive Vogel  
Secretary: Kathy Bruce  
Co-Ordinator Nancy Robinson  
**Secretary: Kathy Bruce**  
Coordinator: Janelle Hoban

**For information on how to contact coordinators or Secretary refer to list at the end on this Newsletter**

## A Word from our President

There are so many new activities and opportunities constantly happening in our region that it is difficult to keep ahead of them all. Thanks to a wonderful Secretary, Kathy Bruce, who is well on top of these matters and better able to report back so eloquently, keeping us all informed and up-to-date. We have entered into an agreement with the Melbourne-based Cargo Arts Magazine to promote ourselves as part of the Gateway artists. Some of our members have been chosen to submit their profiles and a general outline of our wonderful Artists' Society was also submitted. Here's hoping that it uplifts our profile and widely promotes us to the local and surrounding community. Whatever the outcome, it is seen as a great opportunity.

We are also preparing to participate in an Open Circuit Studio Program with the Gateway community which will see AWAS artists in painting demonstrations during open studio days, yet to be determined.

The Charity exhibition (Head Space, Wodonga) is well under planning stages with a sub-committee investigating publicity and other matters of relevance to producing a successful and enjoyable evening on Thursday 30<sup>th</sup> July. Our charismatic auctioneer will be Peter Drummond and our guest who will formally open the exhibition will be Ms Cathy McGowan AO, MP and Member for Indi. At this juncture I take the opportunity to outline the role of sub-committees as determined by the Committee.

Sub-Committees operate as a working group of the Committee and, as such, report back to the full committee for final decisions to be made and acted upon. They operate as the recommendation arm of the committee but are not the final decision makers. All members of the sub-committee work at an equal level on an equal footing and are an exemplary display of team work to achieve the final goals of the Committee.

I will be absent until the end April so I hope you all had a Happy and Peaceful Easter break with much love and many hours of happy creativity. Christina Zey President

# Studio News

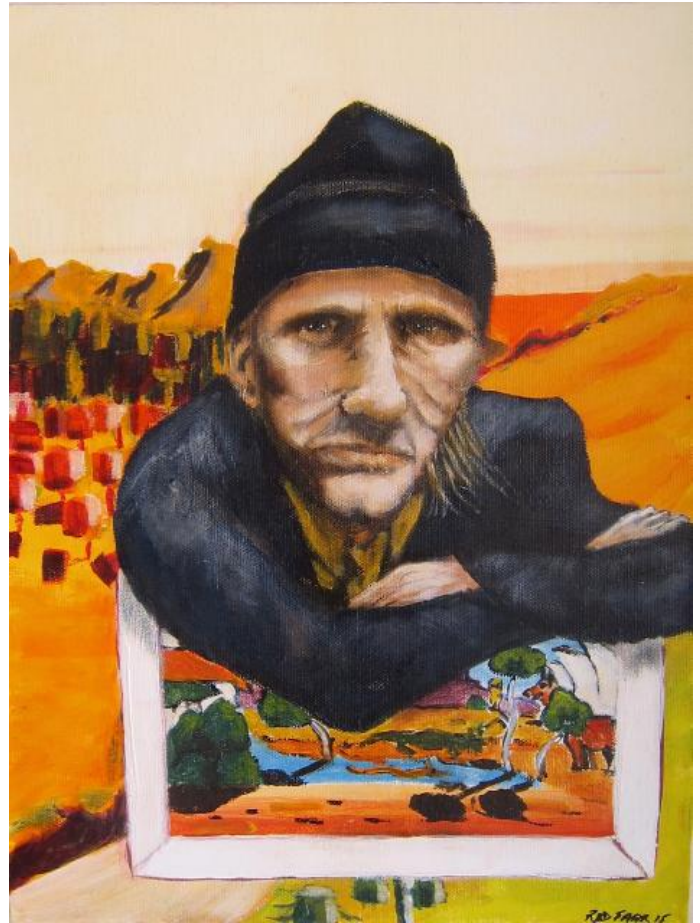
## Figurative Exhibition

Our "Figurative Exhibition" at the studio was very successful. The work submitted was diverse in media and subject making for colourful, interesting viewing. (A couple of examples below) The exhibition was well patronised by the general public. Thanks to all who exhibited.

Thanks to Kathy Bruce for the great pics:



Portrait by Lyn Callaghan



Reg Mombassa by Rod Farr

---

**Position Vacant:** Our treasurer, Marg Robins is in desperate need of a new assistant. Please give her a call if you would like to volunteer. 0260439915

## Acrylic Group

This year we already have some exciting activities planned and are looking forward to seeing our regular members and any new members who would like to join us. Although we say 10 a.m.- 4.00 pm there is no obligation to stay all day. You may only have time to come morning or afternoon. That's ok.

**April** Visit Wonga Wetlands

---

On Saturday April 11<sup>th</sup> we will be visiting Wonga Wetlands – Riverina Hwy (past the Albury Private Hospital). Meet at 10.00 a.m. at the entrance near the car park.

Bring – art supplies to paint/sketch. Easel. Chair. Hat. Drink/thermos, snack, lunch.

If you need transport or more information please contact me. I look forward to seeing you there.

Nancy Robinson (0260 243 127)

**May** Van Gogh Practise a style using calligraphic lines using fluid brush strokes to create an artwork with the real character and unique qualities of Van Gogh. This is an opportunity to work towards our “Celebrating the Life of Van Gogh” Exhibition in July. All interested members welcome to come along.

Nancy Robinson (Co- Ordinator)

### **Life Drawing special Sessions: “From Light to Dark”**

Draw and paint the Human Form within an environment in which strong light interplays with contrasting darkness. Be prepared to experiment with various media to capture the play of light and dark on the Human Figure

When: Mon 13<sup>th</sup> April & Mon 11<sup>th</sup> May

Time: 7pm – 9pm

Models: Different model for each night

Cost: Members: \$12.00. Non members: \$16.00. Payment will be made on the night for each session.

**Please note:** If you have, or can borrow a head torch, it could be very handy on the night.

---

### **"Life in Colour" - an exhibition by two of our members:**

There will be an exhibition of paintings by Carol Gilbert and Glenys Baxter at the Spiritus Art Gallery in Yackandandah from 24th April until the 17th May.

Opening night is Friday evening the 24th April, 5.30 - 8.00 p.m. - refreshments provided. The gallery is open 10.00 a.m. - 4.30 p.m. Wednesdays - Mondays.

---

### **Art Excursion**

Anyone interested in sharing costs and/or driving to Grampians “**Brushes at Halls Gap**” in September please contact Janet Buckton 0428820440.

### **AWAS Workshop**

Tentative arrangements are being made for a weekend workshop - 27th and 28th June. Stephen McCall, from Bright, will be the tutor and he is a wonderful pastelist. For this workshop Stephen has suggested a mixed media approach with underpainting and textures incorporated with pastel. You don't have to have pastels as Stephen is happy for participants to use some of his and I think members with pastels would also be happy to share. So jot this dates in your diary and if you haven't tried pastels this will be a great opportunity to give it a go.

### **Booking Solo/Joint or Small Group Exhibitions at studio:**

For solo/group exhibitions in ‘Free Space’ times at the studio: fill in the expression of interest list on the noticeboard. Contact: coordinators Christina Zey or Kathy Bruce.

---

## Preparing for our 2016 Exhibition at the Albury Art Gallery

You may remember the exciting news at the end of last year- AWAS has been invited to put on an exhibition at the new Albury Art gallery! Added to this, they have waived the venue cost. We all will prepare our exhibition under the guidance of the Gallery's curatorial staff. So what does this mean? The curator will ensure that the artworks we submit follow an overall theme, so that the exhibition has maximum impact on the viewers, that the exhibition communicates the desired message, and that all artworks are displayed to their best advantage. Bianca Acimovic will meet with AWAS members monthly to guide the development of works.

At our first meeting Bianca gave us some starting points for discussion:

- What will the exhibition communicate?**
- Who will come to the exhibition?**
- Who is the target audience?**
- What does the exhibition say about the group? What should it say?**
- What themes are of interest?**
- How do we bring the works together visually?**

At our General Meeting we discussed some of these issues. We were encouraged to look past regionalist concepts and consider the bigger picture of exhibiting in a major gallery. Discussion centred on our identity as part of a changing community, located between 2 states with a mobile population with diverse backgrounds: some come from elsewhere and bring wider experiences than those who have close links to the land and the heritage of the local community. "A diverse tapestry" was the expression used to capture this idea. We also discussed the wider audience, including school groups and educators. The discussion was ably led by Alison Percy.

---

### Australian Decorative and Fine Arts Society:

The next ADFAS lecture will be at The Cube on Friday evening 8th May. Wine and nibbles are served from 6.00 - 6.45 and the lecture is from 7.00 - 8.00 p.m. The lecture topic is "The Great Age of the Poster - Posters of the Bell Epoque" The lecturer, Charles Harris, is from Britain. This lecture illustrates the technical innovation, creative genius and remarkable craftsmanship that enabled the poster to become the world's first effective method of mass communication. From Manet to Cheret to Steinlen, Mucha and Toulouse-Lautrec, you'll see inspirational work by the original Masters of the Poster. Learn how an effective poster is designed and how it plays on the mind; and why most posters go unnoticed today. All lectures are accompanied by many, many visuals and they should be stunning for this topic. \$25.00 is the cost which includes the refreshments and the lecture

## Plant Farm News

April:

**Members please note that the Autumn Exhibition will be hung on Tuesday 14<sup>th</sup> one week later than expected.** Please advertise this as you mentioned in the newsletter, with the time of 3pm for delivery, and pickup of work from the summer show even if you are not putting work in the new autumn show.

June: 'Winter Blues' Hung 2<sup>nd</sup> June.

## Art Quote:

"Art is not what you see, but what you make others see."

Edgar Degas

---

## Studio Session Co-ordinators

Life Drawing      Contact: Clive Vogel 0427774214  
Acrylics          Contact: Nancy Robinson 0260243127  
Portraiture      Contact: Janelle Hoban 0401 919813

## Workshop Co Ordinators

Pastels          Contact: Lin Stark 60560938  
Water Colour    Contact: Jenny Wallace 60264800  
Oils              Contact: To be decided

**Studio Exhibitions:** Christina Zey & Kathy Bruce

**Plant Farm Exhibitions:** Heather Sparks: [hcolebourn@exemail.com.au](mailto:hcolebourn@exemail.com.au) 0260595306

**Website Co-ordinator:** Barb Strand Ph: 60414792 [martinstrand@westnet.com.au](mailto:martinstrand@westnet.com.au)

<b>President</b> Christina Zey Ph: 6040045 0410511211 <a href="mailto:cristina2zei@gmail.com">cristina2zei@gmail.com</a>	<b>Vice President</b> Lin Starke Ph:0260560938 Mob:  Linda.starke@yahoo.com.au	<b>Treasurer</b> Margaret Robins Ph:0260439915 <a href="mailto:marjohnrobins@westmont.org.au">marjohnrobins@westmont.org.au</a>	<b>Secretary</b> Kathy Bruce Ph:0260255913 <a href="mailto:kathleenbruce@bigpond.com">kathleenbruce@bigpond.com</a> Vice:Heather Green Ph:0260246523 Heather.estelle.green8@gmail.com	<b>Newsletter Editor</b> Carol Smith Ph:60245094 <a href="mailto:carolann@westnet.com.au">carolann@westnet.com.au</a>
--	---	--	---	--



**Frames**  
1/461 Olive Street  
Albury NSW  
Ph & Fax: 02 6023 6999  
email: [albury@framesnow.com.au](mailto:albury@framesnow.com.au)  
[www.framesnow.com.au](http://www.framesnow.com.au)

**NOW!**  
**Factory Outlet** 10% DISCOUNT FOR ALL MEMBERS  
MAT CUT SERVICE AVAILABLE

**Cremers**  
*Stationery & Art*  
478 Dean St **ALBURY**  
Ph: (02) 6041 5511  
Fax: (02) 6021 5100