



ALBURY - WODONGA
ARTISTS SOCIETY

NEWSLETTER


PAINTBOX STUDIO/GALLERY
GATEWAY ISLAND, LINCOLN CAUSEWAY,
PO BOX 1170,
WODONGA, VICTORIA 3689

www.awartsoc.org
awas@awartsoc.org

VIC no. A0018404D

ABN 74817 556 011

DECEMBER 2023

Studio sessions		
Saturday 2 nd December	Life Drawing 1 – 4pm	Contact: Olga 0447 770 735
Saturday 9 th December	Acrylic/Mixed Media 10 - 4pm	Contact: Jill: 0412 477 804
Tuesday to Friday, Sunday, all Saturday mornings, all day on the last 2 Saturdays of the month.	“Social group”. Paint / Chat. All members are welcome. Daily access for members.	Informal.
Studio Silliness		
Wednesday 20 th December <i>(Studio Exhibition continues until Jan 4th)</i>	Christmas Prosecco and nibbles 12.30pm <i>Join our usual Wednesday group to celebrate Christmas</i>	Bring nibbles, an arty Kris Kringle Nibbles to share And some art to do.
Other Events		
 Saturday December 16th 12.30pm	AWAS Members Christmas event Bended Elbow Hotel, Dean St, Albury	RSVP by Saturday December 2 nd to the Secretary, Kathy 0497 108 079
Tuesday 12 th December <i>Exhibition changeover 2.30pm Wodonga Plant Farm</i>	Plant Farm Exhibition “Summer Sale” Maximum price \$150	Contact: Tanya 0407 238 923

Looking ahead to 2024:

Book in for the **LIFE DRAWING 4 DAY MARATHON** January 5,6,7,8th

Plan to come to our New Year welcome to members **Wednesday February 6th**.

CHRISTMAS GIFT SUGGESTIONS

By Oren Arnold

Christmas gift suggestions:
To your enemy, forgiveness.
To an opponent, tolerance.
To a friend, your heart.
To a customer, service.
To all, charity.
To every child, a good example.
To yourself, respect



CHRISTMAS CELEBRATIONS



A table booking was made for an AWAS Christmas celebration at the Bended Elbow in Dean Street, Albury, Saturday 16th December at 12.30. We meet in the Laneway bar area, which was where Cremer's Art Supplies used to be.

How many tables will we need??

Please RSVP the Secretary 0497 108 079 by Saturday 2nd December. We have 6 definite replies already. We have over 50 members.... It will be great to see you there.

AWAS MEMBERS NEWS

Welcome to new member Alex Gray. We look forward to you joining us in some of our drawing and painting sessions.

As you would know from our AGM reports in our August newsletter, we need to build up membership and make some profit on workshops and sales to continue to rent this ideal studio space. Please consider how you can help us continue to thrive.

At the recent Committee meeting we decided it would be good to have a social get together for members early in the year, so....

Tuesday February 6th: a NEW YEAR Social Day at the studio. Bring lunch to share and new paintings to hang 12.30 to 2pm. Lucky door prize? Group mural activity? These details to be considered and decided upon during the holiday period.

Membership subscriptions: The last day to pay renewals was October 31st. If you missed that date, you will need to formally reapply for membership, filling out an application form! Membership Renewals (\$100) were due July 1st

For all payments to AWAS:

Hume Bank BSB: 640-000 Account No: 111256122

Cheques to: The Treasurer, Albury Wodonga Artists Society, PO Box 1170, Wodonga. Vic. 3689. *AWAS Treasurer: Tony Ph: 0438 402 499*

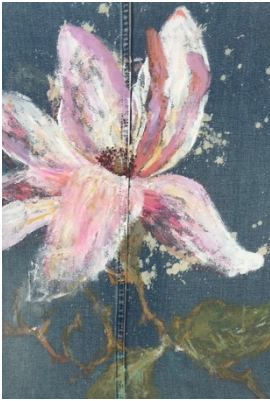
DECEMBER: AWAS WODONGA PLANT FARM EXHIBITION

The December exhibition is "Summer Sale". The maximum price for these works is to be \$150, making them ideal gifts. This remains over the Christmas/New Year holiday period. It may be an idea to have some substitute works on hand to replace all that will be sold during the holiday period!!! Changeover date is Tuesday 12th December at 2.30pm.

JANUARY: LIFE DRAWING IN AIR- CONDITIONED COMFORT!

The January Life Drawing Marathon is on again: Friday to Monday 5,6,7,8 January. Participants can book in for single sessions (approx.\$25) or all sessions. There may be some evening sessions. Contact the coordinator, Olga 0447 770 735.

STUDIO EXHIBITION: CHANGEOVER JANUARY



Thank you to all those members who have supported our Studio Exhibitions this year, as it gives members opportunities to showcase their love of painting and encourages more members to participate and contribute.

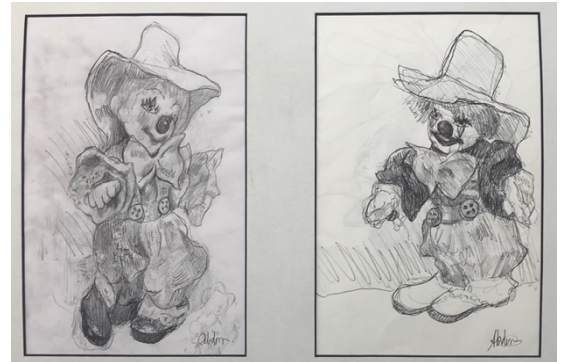


Artworks by Heather Green, Kylie Waldon and Andrew Donnelly.

The November exhibition is colourful and features some interesting collage ideas and images. It will remain throughout December.

Please remove works by Thursday 4th January to make way for the Life Drawing 4- day Marathon 5th to the 8th January, followed by their exhibition.

Jill Scanlon



“ART AT THE FAIR” A one-day group exhibition.

AWAS painters were invited to join with other artists in a **one-day exhibition “Art at the Fair” Saturday November 11th** at St David’s Uniting Church in Albury. “Art at the Fair” exhibition at St David’s Fair on November 11th was well received and had lots of works by local artists including Scot’s school student work. She thanked AWAS members for their support by offering their paintings for exhibition for the day.

Kathy Bruce

LOOKING AHEAD TO 2024: you can help make AWAS what you want it to be!

Share your paintings with members by taking part in our exhibitions- and take the opportunity to sell. After the **January Life Drawing Marathon (5,6,7,8th)** and their exhibition, we will be once again hanging general works in the studio.

We are still seeking **a volunteer to run the Portrait session** on the 3rd Saturday afternoon each month. Since Janelle stepped away as coordinator, we have not continued these sessions.

Tutored **Workshops**- We are seeking **ideas for workshops for next year**. To date none have been booked, although tutors from this year (Terry Jarvis-watercolour, and Steve McCall-Pastel), have expressed a willingness to run workshops again here next year.

We need suggestions from members for other media workshops, perhaps one day workshops by local tutors.

Have you some arty skills you can share with members?

A suggestion has been made that AWAS members volunteer to run 1 or half day workshops in their area of expertise. Participants book in and are charged a small fee to cover studio costs (but **no tutor payment**).

Have you any art supplies or equipment you no longer need? (New, barely used, half used)?

It has been suggested we have a trading day at the studio. Any suggestions on how this could be organized are welcome as we have not done this before, but I am sure many of us could contribute to something like this.

Email your suggestions about these ideas to the committee via the secretary:

(kathleenbruce@bigpond.com)

Themes for Next Year's Wodonga Plant Farm Café Exhibitions:

February 13 "The Land" (*on, from, of the land as well as landscapes*)

April 9th "Animal Life" (*Pets, the farm, wild, birds, insects, people*)

June 11th "From my Archive"

August 13th "Water" (*fresh or salt, free or contained*)

October 8th "Plants"- (*Alive or otherwise: trees, shrubs, flowers, fungi, still life arrangements*)

December 10th "Summer Sale". All artwork capped at the same maximum price.



REMEMBER THIS AT CHRISTMAS TIME

According to the Alaska Department of Fish and Game, while both male and female reindeer grow antlers in the summer each year, Male reindeer drop their antlers at the beginning of winter, usually late November. However, Female reindeer retain their antlers till after they give birth in the spring. Therefore, according to EVERY historical rendition depicting Santa's reindeer in late December, the beloved Reindeer, from Rudolph to Blitzen, had to be Girls! We should've known. ONLY WOMEN would be able to drag a big fat man in a red velvet suit all around the world in one night and not get lost.

