

ALBURY - WODONGA  
ARTISTS SOCIETY

AUGUST

NEWSLETTER No. 141

PAINTBOX STUDIO/GALLERY  
GATEWAY ISLAND, LINCOLN CAUSEWAY,  
P.O. BOX 1170,  
WODONGA, VICTORIA 3689  
[janelle@tadaust.org.au](mailto:janelle@tadaust.org.au)  
[awas@awartsoc.org](mailto:awas@awartsoc.org)

August 2010

Proudly supported by:



Have you seen our new look website??? It is fantastic, huge thanks to Pieter Mol for managing this for so long. Veronica and Elizabeth Farrelly for the very professional job they have done in updating the site (even an instruction manual). John Mason and Pieter again for the research on "About us" and "Past Presidents" and last but certainly not least, Kathy Bruce for the monthly photographing of the current works in the studio, these are then uploaded to the site. If you haven't done so already, have a look and upload your paintings. [www.awartsoc.org](http://www.awartsoc.org)

Our Annual Exhibition in November and curated by Audray Banfield is coming up fast! We are keen that all members get involved and with almost 100 of us, it should be a great Exhibition. Remember that:

- Limit of three paintings for selection of which at least one will be selected
- Canvas edges must be painted and works on paper must be framed.
- Works **must** in the studio by 3pm 29<sup>th</sup> October, ready to be hung

*(And, we will have our very professional new lighting system which will greatly enhance the look and feel of the Studio (see "housekeeping" below for details)*

We have been given the opportunity to manage the bookings for Wodonga Plant Farm's Café Gallery. AWAS members will have priority for the monthly exhibition spaces. More details will be given in a month or two. Until then, no bookings can be taken. It is a fantastic opportunity to have your work shown in a busy setting. The only cost to the Art Society or the exhibiting member/members will be the physical hanging of the work. No financial cost whatsoever!!! This is a very generous offer from the Pollard Family and I hope we can do it justice.

Did you go to Canberra to see the "Paris" Exhibition? If so, could you please contact the AWAS Secretary – Janelle Hoban with the details of your experience, eg. How long did it take to get there, how long did you spend in queues, etc.? If you have any ideas as to how the Gallery could have managed the large numbers of people for entry, catering, viewing the works etc. better, then please share this also. We are intending to write to the NGA (focusing on the positive), with our thoughts and ideas. Several of our members experienced large delays and have some ideas that could have alleviated some of the problems. There is no point complaining if we don't speak up, so please share your experience. If we get sufficient responses, a letter will be drafted and available to be read prior to sending it to the NGA.

### Heather Sparks

The Gateway Tenants's Christmas in July day was a Farmers Market day-July 24th. We had an art stall sale of our unframed artworks and invited the public to join us in a special Still Life session from 10 am to 12 pm. A fireplace suddenly appeared on the gallery South wall adorned by reindeer and teddy bears, colourful gift wrapped presents, tinsel, angels and teddy bears. Members had fun preparing the session, and enjoyed the morning drawing. Only one or two non-members joined in the drawing session and visitors to the exhibition and unframed sale increased in the afternoon as the foggy weather cleared. Numbers however, were down compared to our well attended open days in warmer seasons last year. Thanks to those who brought in work for sale and to those who contributed to the Still Life: especially Tim and Carol Gilbert for bringing in the fireplace.



### Kathy Bruce

The watercolor workshop held on the last weekend of July tutored by Malcolm Carver was a great success. Fourteen members of the watercolour group attended, as usual a full class. Everyone said they got something new out of the workshop.

Malcolm was extremely generous with his time, his drawing skills were no surprise as we were all expecting him to be very precise but what did surprise us all was his preoccupation with water, mixing paint on the paper and letting it blend and run. He expected us all to be far more accurate with our drawing and probably more detailed than we are used to, also saying he feels it OK to trace in the interest of accuracy. Then using hot pressed smooth paper he demonstrated how he used the medium stressing the freshness and movement if you wet the paper well and then splatter and throw on unmixed colours and move them around the paper to get the desired effect.

Perspective was part of the second day and incorporating all the skills he had taught us the previous day we all presented a picture for him to individually appraise and advise us on. Everyone in the workshop worked very hard all weekend and really felt they had learned something new. Everyone said they would like to do a pleinair workshop with him in the future.

### **Meg Brown Co-ordinator**



## *New Members*

Please welcome our newest members: June Friend, Harry Jakobs, Mary Stitz, Billie Perry and returning member Bev McCathie Carol Gilbert.

## *Members out & about!*

*(Email from Margaret Moran. Unfortunately, I was unable to open the photos that Margaret sent.)*  
Hello everyone

Just another update on where we are. At present we are at Katherine which is much more comfortable (weather wise) than Darwin. We spent a week or so exploring the "Top End" with plenty of good photos, but the humidity and the mozzies made it very uncomfortable, but overall very gratifying.

Our next move is to the west after the van is serviced and we stock up.

The photos are of a saltwater croc in Corroboree Billabong, and a small painting done by me at Coomalie Creek near Batchelor.

We miss you all. Love

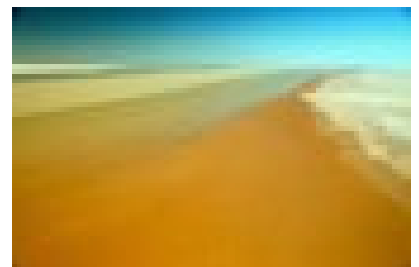
### **Margaret & Hans**

Tonight I went to the opening of the David Taylor aerial photographs of Lake Eyre country at the Gigs Gallery. The photographs were taken during a Smartair tour of the floods.



If you are interested in seeing this unusual phenomenon, Smartair are running these tours until September. Have a look at David Taylor's stunning photos on their website  
<http://www.smartair.com.au/eyre.html>

**Kathy Bruce**



## Upcoming Activities!

**28<sup>th</sup> & 29<sup>th</sup> Aug 2010** – Acrylic Workshop      Cost \$150.00      Tutor: Brett Bailey      Co-ordinator: Doina Eitler- 6024 3306  
*This workshop is now full. Final payments were due 23<sup>rd</sup> July, please forward your payment immediately if outstanding.*

**9<sup>th</sup> & 10<sup>th</sup> Oct 2010** - Oil Workshop      Cost \$150      Tutor: Paul McDonald-Smith      Co-ordinator: Kylie Maguire

**Alvaro Castagnet** – We have been in contact with Alvaro in regard to a Watercolour workshop to be held late 2010 or 2011. Details will be given when the dates are finalised.

Our workshops are supported by:



## Exhibitions & Competitions!

- Melbourne: NGV, European Masters, Exhibition from Stadel Museum in Germany. Now to 20<sup>th</sup> October. See the exhibition on line at <http://www.ngv.vic.gov.au>  
Royal Art Fair 4<sup>th</sup> – 8<sup>th</sup> August, Royal Pavillion.  
The 20 Melbourne Painters Society 2010 Annual Exhibition. 3<sup>rd</sup> – 15<sup>th</sup> August. Glen Eira City Art Gallery  
Titanic: The Artifacts Exhibition. Melbourne Museum. Now to the 17<sup>th</sup> October.
- Ballarat: Ballarat Art Gallery: "In your face", cartoons about politics and society from 1760 – 2010. Till 8<sup>th</sup> Aug
- Benalla: Benalla Art Gallery: 3<sup>rd</sup> July - 16<sup>th</sup> August. Conceptual Artist Caroline Williams "Beyond the persona, eminent women of Victoria".
- Pheiffers Winery: Sculpture in the vines. Free entry 9 – 5 Mon to Sat 10 -5 Sunday. Now to 26<sup>th</sup> August
- Rutherglen: **Kokoda** Track exhibition. Rutherglen Information Centre. 3<sup>rd</sup> July - 2<sup>nd</sup> August. **Please excuse my carelessness in incorrectly having this as Dakota in last month's newsletter. Jo Whitehead**
- Wagga: Wagga City Gallery, Archibald Exhibition 22<sup>nd</sup> July – 22<sup>nd</sup> August  
Wagga City Gallery, 22<sup>nd</sup> July - 5<sup>th</sup> Sept, Viewpoint. Works inspired by the Riverina farming landscape by Chris Ellis.

### Future Exhibitions 2010 & 2011

AWAS Annual Exhibition – Opening 5<sup>th</sup> November 7-9pm, Closing Sunday 21<sup>st</sup> November

AWAS Annual Exhibition, September 12th – October 8th 2011

## Housekeeping!

### Health & Safety:

We have a copy of an article written by a member of the Victorian Artist's Society which discusses safe techniques for the use of our painting mediums. We are seeking permission by the Author of the article to place it on our website. In the interim some copies have been placed in the studio for members to take and one on the noticeboard.

**Studio:** The Committee has voted that we proceed with the lighting project. The cost will be approximately \$3500, will be inexpensive to operate and easily relocated in the event that we moved location. Many thanks to Tim Gilbert for the massive amount of time he has spent researching this for AWAS.

**Security:** We have recently had some issues with the heating not being turned off in the studio and with the locking of the studio. Please turn off heating 10 minutes prior to leaving the building, the heater in the main area seems to be a little temperamental when it comes to turning off. Also, when locking the main door, please lock the deadlock first.

**Supplies:** **Aprons, shirts** etc. with our popular AWAS logo. Order from Sheila at TWW, 769 Mate Street, Albury 60216274.

Member Bev McCathie has given the details of a specialist art supplier in Melbourne. **Canvas boards** with various surfaces and in any size. J & N Harrison, 457 Mitcham Road, Mitcham Tele: 03 98731849  
Fax: 03 98740445.

# Dates for your Calendar

Mondays -Di Swann Oils Class 10-1pm. If you are attending, Ph. 02 60712301. Cost \$25

7 <sup>th</sup> Aug	Saturday	-Life Drawing 1 – 4 pm	Elsie Reitenbach, Co-ordinator
8 <sup>th</sup> Aug	Sunday	Solo Exhibition – Graham Howse	
11 <sup>th</sup> Aug	Wednesday	-Committee meeting 3.00 pm	Janelle Hoban, Secretary
21 <sup>st</sup> Aug	Saturday	- Portrait session 1:30 – 4:15 pm	Janelle Hoban, Co-ordinator
18 <sup>th</sup> Aug	Wednesday	-General Meeting 12:30 pm	Janelle Hoban, Secretary
19 <sup>th</sup> Aug	Thursday	-Charles Sluga Watercolour class	Meg Brown, Co-ordinator
22 <sup>nd</sup> Aug	Sunday	-Solo Exhibition - Shiela McGuire	
28 <sup>th</sup> & 29 <sup>th</sup> Aug	Sat/Sun	- Acrylic Workshop	Doina Eitler
29 <sup>th</sup> Aug	Cancelled	-Still Life session 12:30 – 4 pm due to workshop	

## Helpful hints:

Have a look at this website which I think gives some interesting ideas on how to go about selling your Art work.  
<http://www.artbusiness.com/artists.html>

## Studio Session Co-ordinators

Janelle Hoban, Portraiture. Contact 0401 919813

Elsie Reitenbach, Life Drawing. Elsie's new number to be advised. In interim call Kathy Bruce 6025 5913

Carol Smith, Still Life. Contact 02 6024 5094

<b>President</b> Heather Sparks Ph: 60243335 Hcolebourn@exemail.com.au	<b>Vice President</b> Meg Brown Ph: 60231651 Mob: 0418 231651 megrayb@bigpond.com	<b>Secretary</b> Janelle Hoban Ph: 60412071 Mb: 0401 919813 janelle@tadaust.org.au	<b>Treasurer</b> Carol Gilbert Ph: 6041 4745 Mb: 0428 321895 bluemaster@bigpond.com	<b>Newsletter Editor</b> Jo Whitehead Ph: 6026 4406 Mb: 0438 015591 jwhitehead@copyprintscan.com.au
---	---	--	---	---

**Open Sundays**  
1pm to 4pm  
or by appointment

Ph: (02) 6023 5248  
Mb: 0408 261 685

840 David St,  
Albury NSW 2640

**Frames NOW!**

1/461 Olive Street  
Albury NSW  
Ph & Fax: 02 6023 6999  
email: albury@framesnow.com.au  
www.framesnow.com.au

**Factory Outlet** 10% DISCOUNT FOR ALL MEMBERS  
MAT CUT SERVICE AVAILABLE

**Cremers Stationery & Art**

478 Dean St ALBURY  
Ph: (02) 6041 5511  
Fax: (02) 6021 5100

**Memorable Hangups**

Fine Art Supplies, Books, Exquisite Beads,  
Picture Framing, Italian Mosaic Tiles, Beading Accessories,  
Tuition / Workshops Available

Opening Hours:  
Mon-Fri 10am - 5pm, Sat 10am - 1pm  
Memorable Hangups offers 10% discount to AWAS members on presentation of their Membership card.

Robyn White  
Picture Framer  
Shop 5, Liverpool Lane,  
Wodonga 3690  
(02)60245621

ph: 02 6024 5621