

ALBURY WODONGA ARTISTS SOCIETY.

*The paintbox, Jenny Craig building,
Smollett Street, Albury.*

Postal Address P.O.Box 1170, Wodonga 3879

WEBSITE: www.awartsoc.org

Newsletter No 198 October 2006-10-23



NEW PRESIDENT. At our annual general meeting on Sunday 8th October, the Committee of AWAS elected Pieter Mol as our new President. Steve McCall was nominated as Vice President. Clara Mol retained the role of Treasurer, and Meg Brown remains our Secretary. The meeting was well attended.
FIRST LADY.

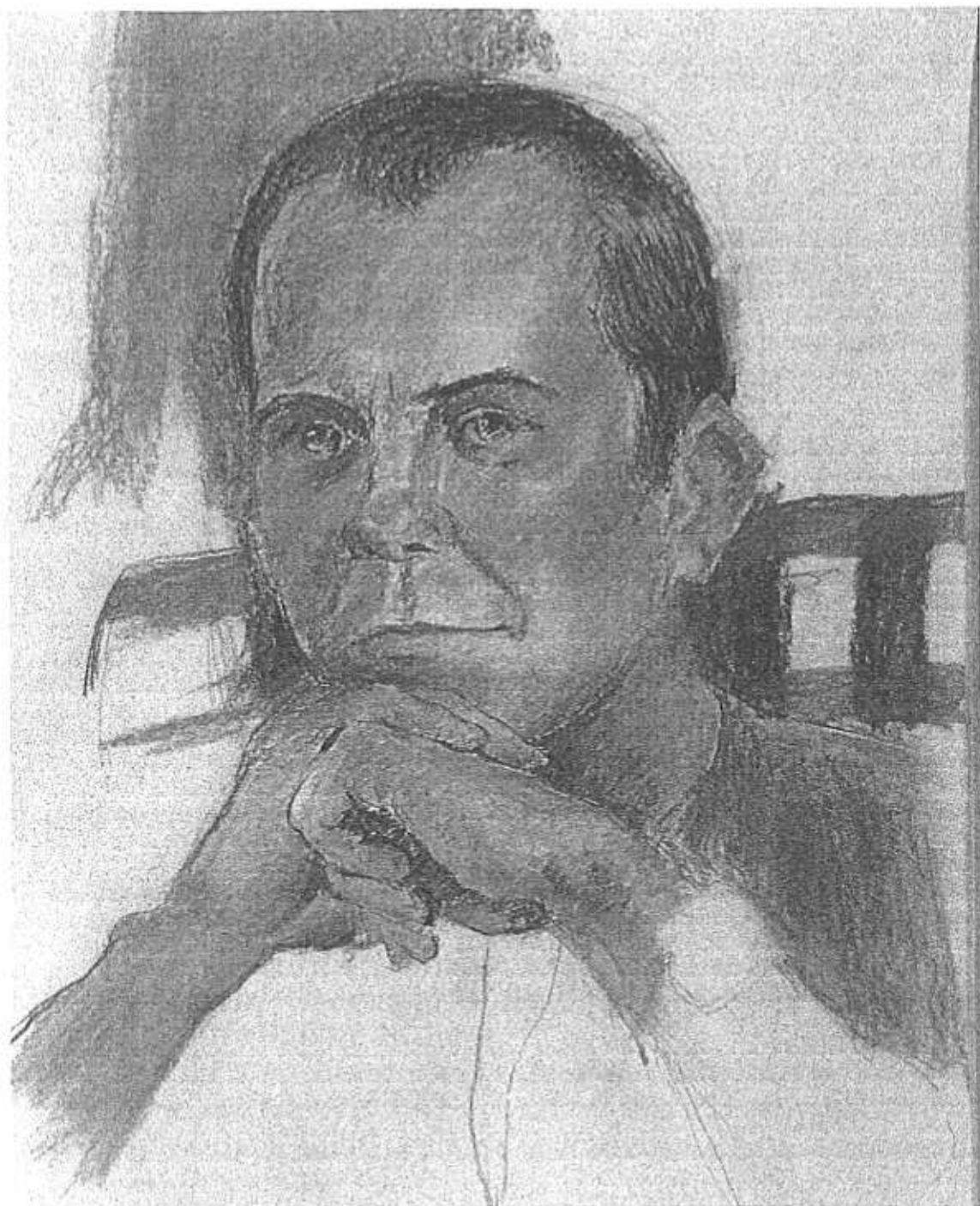


PRESIDENTIAL PONDERINGS

Not deep and heavy as the title may suggest, it's just that I like the alliteration.

Well here we are again at the beginning of a new AWAS yearly cycle. A slightly altered team at the helm, so we can look forward to some continuity of direction New members bring in new ideas, things to do, places to go. We welcome you, and your ideas, at all adds up to create an interesting and vibrant environment in which to work. However, work is the operative word (in our case painting), and we must not let new ideas distract us from

our fundamental activities. Studio work such as Wednesday painting, Life Drawing, Portrait Painting, and various workshops. In this endeavour, we support and encourage each other, and receive valuable input from experienced workshop tutors. We need you as a member, so share with us your knowledge, and be enriched by others. The committee wants to create for you opportunities to be actively involved in some aspect of AWAS life. I also propose to introduce a regular column to be called 'IN MY OPINION' Let's Communicate, be in it, be heard!!



PORTRAIT BY MERRILYN

JANUARY THREE DAY LIFE
DRAWING.....



MELBOURNE CUP DAY.

Members are invited to a paint and social afternoon, at Paintbox Studio., from 11.am. We request that you bring a plate. Hats are essential however, be it a casual cap, or High Fashion. Do come along and enjoy a creative afternoon.

PORTRAIT IN THE PARK.

Painting in the Park will go ahead on the 18TH of November as an alternative to our usual Studio Session. Bring your equipment, and easels if you have them. The Society can supply some Easels, so come along and create. Commences at 1.p.m. until 4.p.m.

Our popular 3 Day Workshop commences on Friday 12th Saturday 13th & Sunday 14th. Cost: Members \$40 per day Non-members \$50 per day, & special rate Students \$10 per day.

For more information phone M.Byrnes on 60 235248.

APOLOGIES FROM JAN.

On the back page of this newsletter, members will find the corrected Roster for our Annual Exhibition.

THOUGHT.

"Before a picture, as before a prince, everyone must stand waiting to see wether and what it will speak to him"

SCHOPENHAUER.



Arthur Schopenhauer

MEET AND

GREET. Changes have been made to the seasonal gathering of our members. It has been decided to hold this function on a Saturday afternoon, so, if you would care to come along, bring a plate, and enjoy displaying your work, whilst keeping up with the direction our members are taking, this is for you. As you are probably aware, members vote on the painting to hang in Cremers Art Supplies Window, allowing a much wider exhibit of ones work. Painting must be unframed, and unsigned. A winning pastel by David Macdonald is now on display., so do go along and view this delightful landscape.

ARE YOU ONLINE? If you have an email address, and wish more access to fellow members, please forward to Meg Brown.

ANNUAL FEES

REMINDER. It's that time again when annual fees are due, 2007. Membership fees are set at \$50 full year, 25 half yearly, with balance due in April. Please submit fees with completed membership form, at the end of the newsletter to: THE TREASURER AWAS, P.O. BOX 1170 WODONGA 3689.

ROSS PATERSON

WORKSHOP. As Member are probably aware, the Life

Drawing Session is to be postponed on that weekend. Happy Hour will occur after class on Saturday 4th Nov. ARE YOU ONLINE? If you would like to communicate with members and committee on line, please send your email address to our Secretary Meg Brown.

LIFE DRAWING AND PORTRAIT FEE CHANGES.

After much discussion the Committee has decided to review fees on both sessions. Life Drawing is now \$12 members, \$20 non members, and our new student charge of \$5 only. Portrait is \$10 members, \$20 non members, and \$5 student.

MEMBERS EXHIBITION.

Would members please submit their paintings as soon as possible, two paintings per person. Paintings may be delivered on WEDNESDAY 1st November between 10-12 a.m. at CREATORS ART SPACE, Gateway Island.

BUDS OF MAY

ART EXHIBITION AND SALE.

Saturday 11th & Sunday 12th

November Opening times:

Saturday 10.a.m-5.00p.m

Sunday 10.a.m.-4.p.m.

Thurgoona Community

Centre.Gold Coin Entry,

Sausage Sizzle, Tea and Coffee

available. Music provided by

Paul Gibbs. For more

information Tel 60431688.

'Bulletin Board'

Life Drawing



WHEN?

1p.m.-4p.m
Sunday 3rd December

WHERE?

Paintbox Gallery
(Unless change of venue when members will
be advised)

COST?

Members \$12
Non-members \$20

CONTACT

Marilyn Byrnes 6023 5248

Portrait Session



WHEN?

1pm-4pm
Saturday 18th November

WHERE?

QUEEN ELIZABETH SQUARE
DEAN STREET.

COST?

Members \$10
Non-members \$20

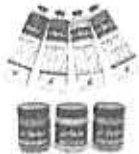
CONTACT

Jeanette Pockley 60271064

ART SHOP

SPECIALS

Atelier - End of Line Sale



All 80ml Tubes, 250ml Pots
& 1 Litre Tub

25% OFF

Only while stocks last.

**CANSON MI TIENTES
PASTEL PAPER**

Now \$ 1.50



COLBY A3 DISPLAY FOLDER 20 POCKETS \$ 5.00
Frédrix Watercolour Pads & Boards 50% Off
Canson Montval 300gsm W/Clr Paper \$3.00
Fabriano Artisico 300gsm W/Clr Paper \$4.20
& Many more Specials,
come in and have a browse.



ART SHOP

MONDAY - FRIDAY
8.45am - 4.45pm

Elisha Cowland
Art Shop Manager

Quality Visual Arts Materials
& Photographic Supplies



Rear 618 Olive Street
Albury NSW 2640
(On University Campus)
Tel: 02 6061 8849
Fax: 02 6061 6031

Open To The Public
Personal Orders Welcome
Eftpos Available

Email: ecowland@csu.edu.au
Web: <http://albury.cousa.com.au>



Memorable
Hangups

ROBYN WHITE
PICTURE FRAMER

8a Dick Street,
Wodonga 3690

Ph: 6024 5621
0418 433 757

CREMERS STATIONARY & ART

ALBURY
478 DEAN STREET
PHONE 02 60415511
Fax 02 6021 5100
WAGGA WAGGA
Phone 02 6921 3845
Fax 02 6921 3845

We now have in stock an
Extensive range of quality Easels
And Art materials.



William Winsor



Henry Newton



ROSTER
ANNUAL EXHIBITION 2006
Creator's Art Space
Building 4 Gateway Village
40 Lincoln Causeway Wodonga Tel: 6041 3886

	Morning 10am - 1.00pm	Afternoon 1.00pm -4pm	6.00pm-8.00pm
Wed 01-11-06	Set Up	Set Up	
Thu 02-11-06	Yvonne Ellwood Birgit Anthony	Wella Lechmere Sheila Maguire	
Fri 03-11-06	Meg Brown Mary Ross	Beryl Hunter Doina Eitler	OPENING
Sat 04-11-06	Marilyn Byrnes Ken Holloway	Bea McGuffie John Mason	
Sun 05-11-06	Elsie Reitenbach Margery Hubert	Merilyn McDonald Pieter Mol	